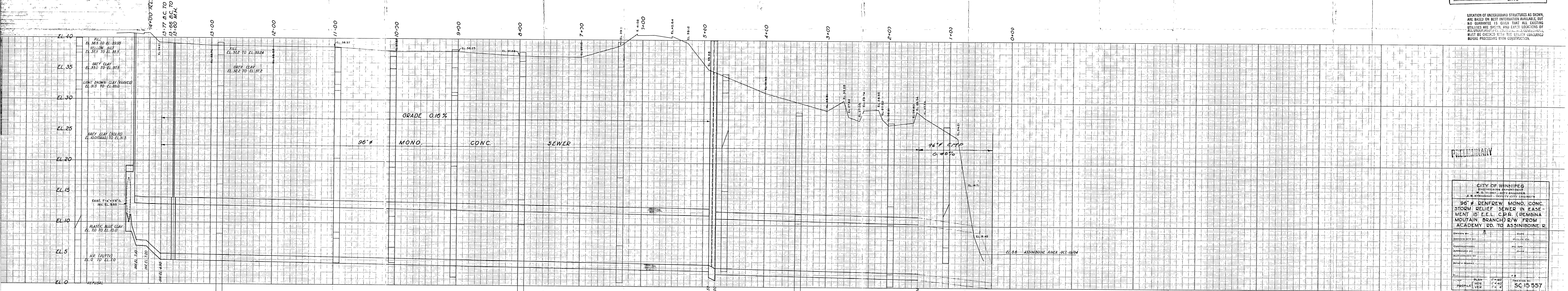


LOCATION APPROVED  
UNDERGROUND STRUCTURES COMMITTEE  
DATE \_\_\_\_\_ Supt. UG Structures Committee

**METRO APPROVAL REC'D.**  
DATE \_\_\_\_\_

LOCATION OF UNDERGROUND STRUCTURES AS SHOWN ARE BASED ON BEST INFORMATION AVAILABLE, BUT NO GUARANTEE IS GIVEN THAT ALL EXISTING UTILITIES ARE SHOWN, AND EXACT LOCATIONS OF ALL UNDERGROUND UTILITIES MUST BE CHECKED WITH THE UTILITY CONCERNED BEFORE PROCEEDING WITH CONSTRUCTION.



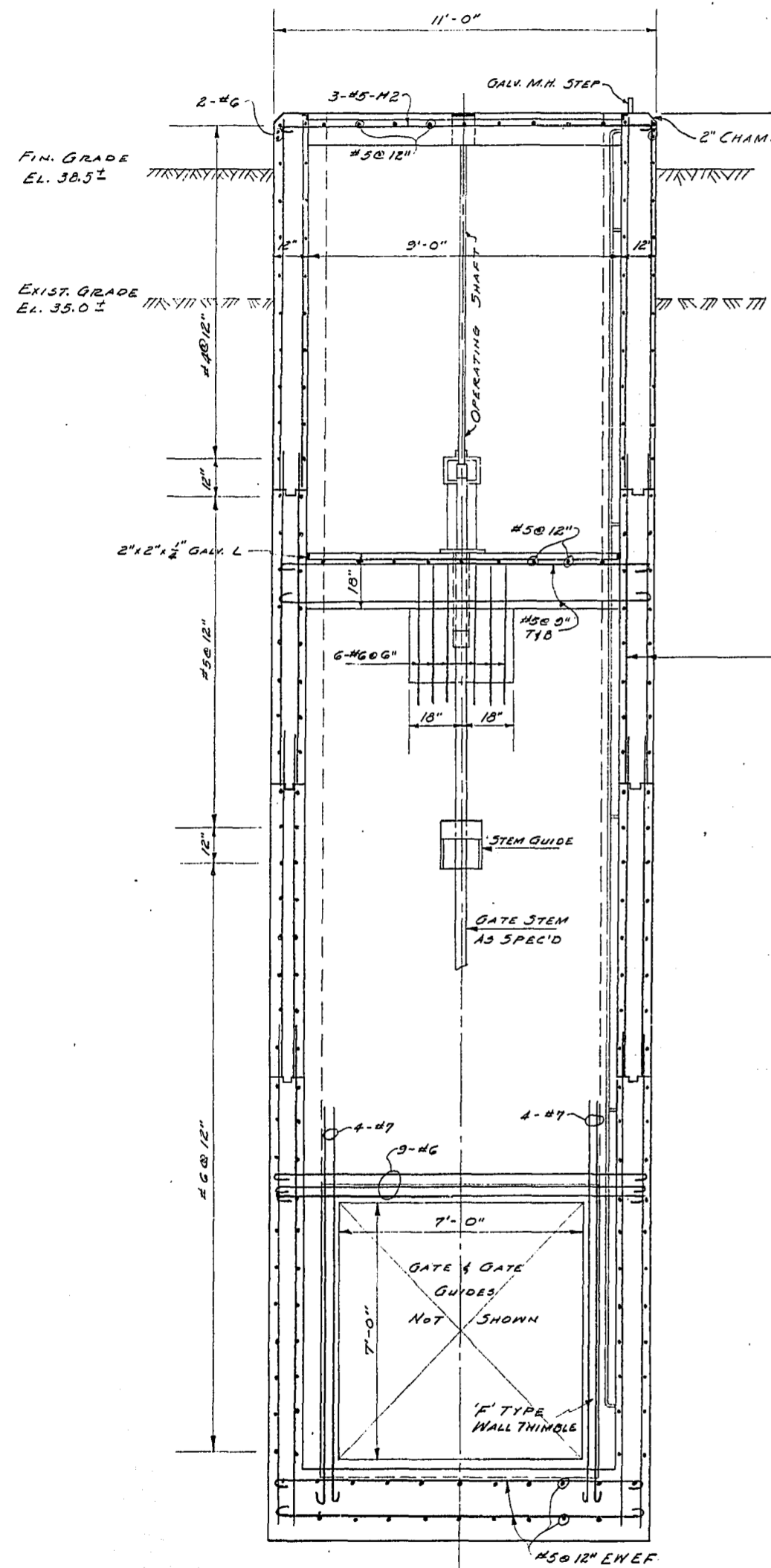
PRELIMINARY

CITY OF WINNIPEG ENGINEERING DEPARTMENT W. G. HUGHES - CHIEF ENGINEER J. E. STYRON - DEPUTY CITY ENGINEER	
96" RENFREW MONO. CONC. STORM RELIEF SEWER IN EASEMENT 15' E.L. C.P.R. (PEMBINA MOUNTAIN BRANCH) R/W FROM ACADEMY RD. TO ASSINIBOINE R.	
Drawn by: _____	Date: _____
Checked by: _____	Project No.: _____
Constructed: _____	Pl. App: _____
Approved by: _____	Project No.: _____
Project Name: _____	Project No.: _____
Scale: _____	Project No.: _____
Sheet: _____	Project No.: _____
Profile View: _____	Project No.: SC-15-557

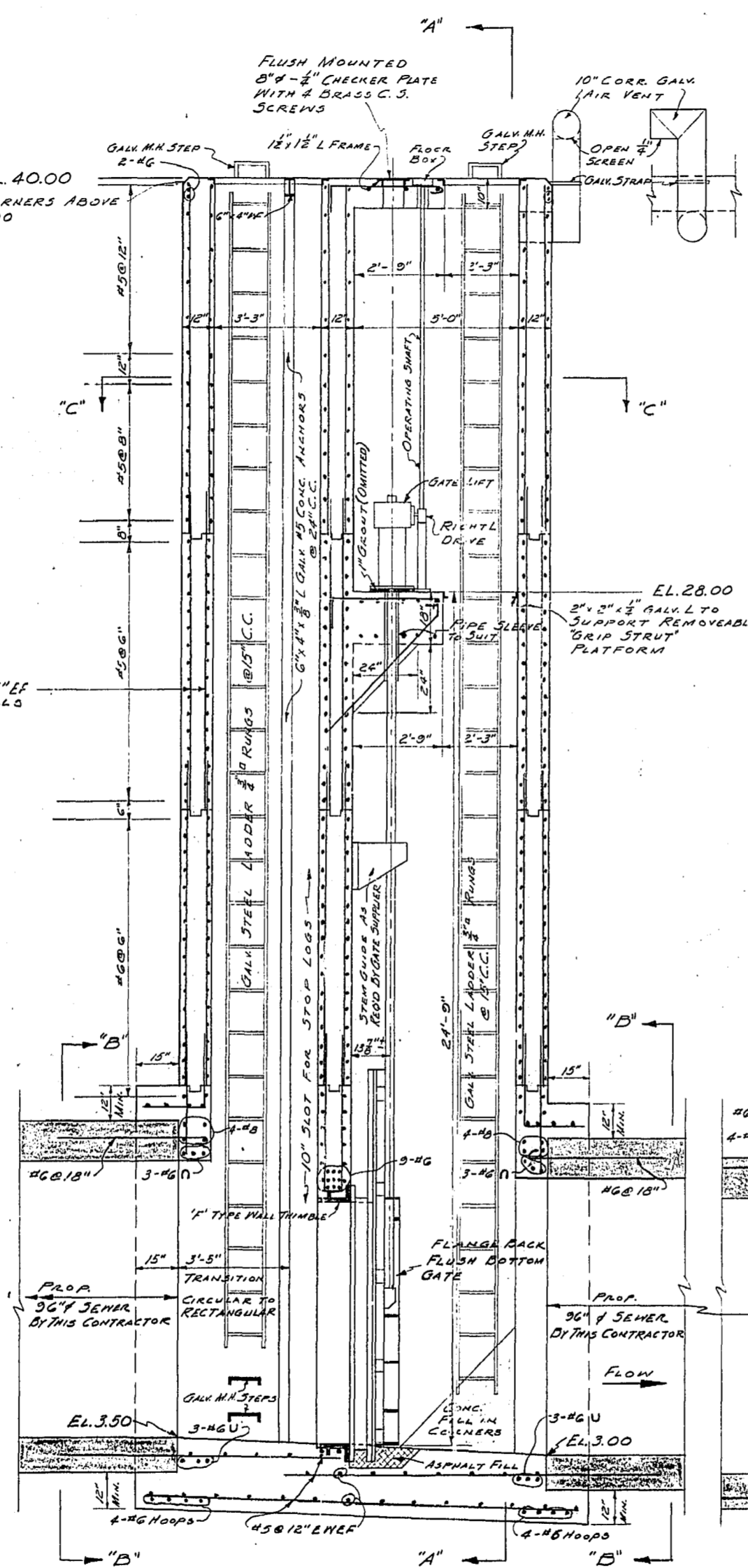
FILE # SE10052

W-723  
W-723

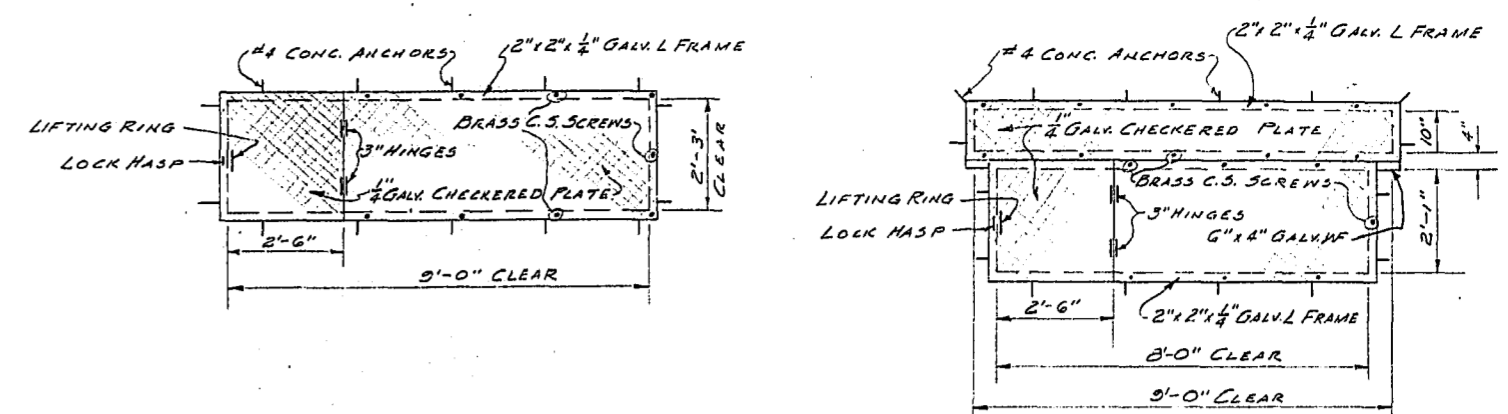
APPROVED: \_\_\_\_\_  
DIRECTOR  
DEC 18 1964



SECTION "A-A"

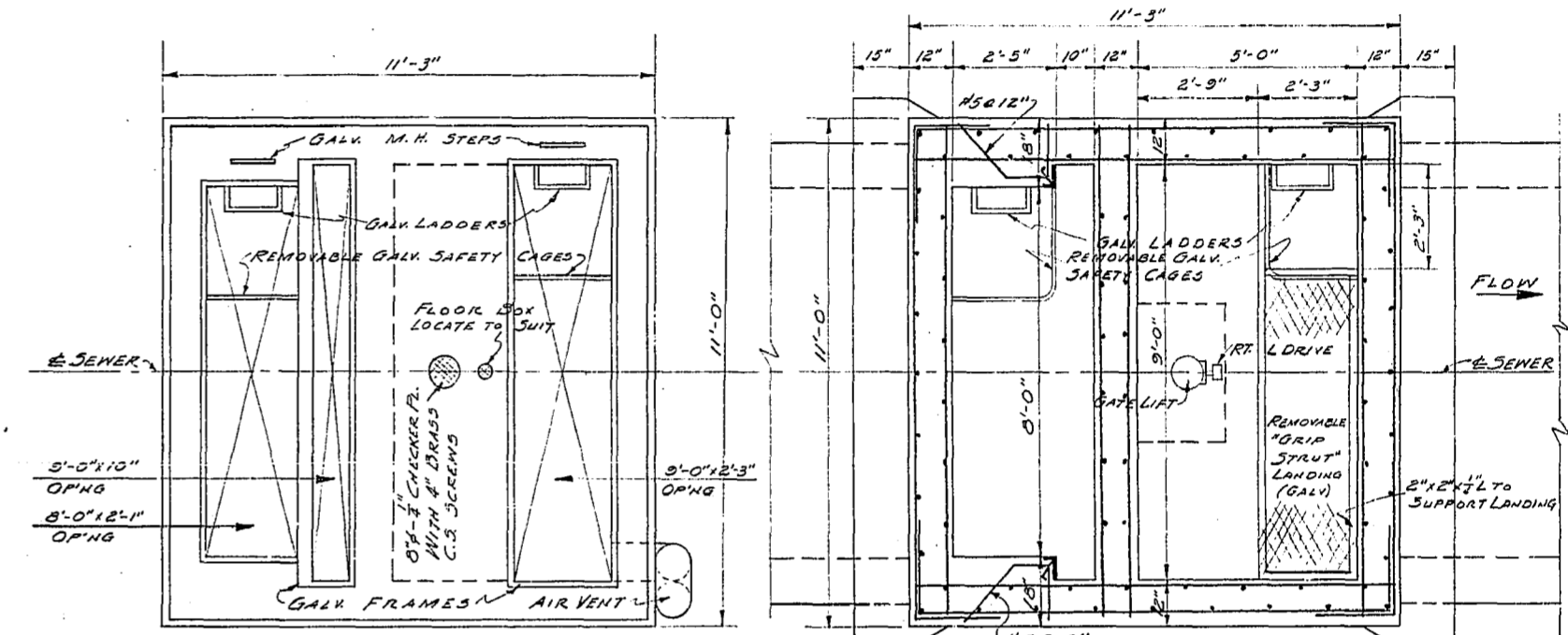


SECTIONAL ELEVATION



HATCH COVERS & FRAMES

NOTE: ALL COVERS TO BE FLUSH WITH TOP OF CONCRETE AT EL. 40.00



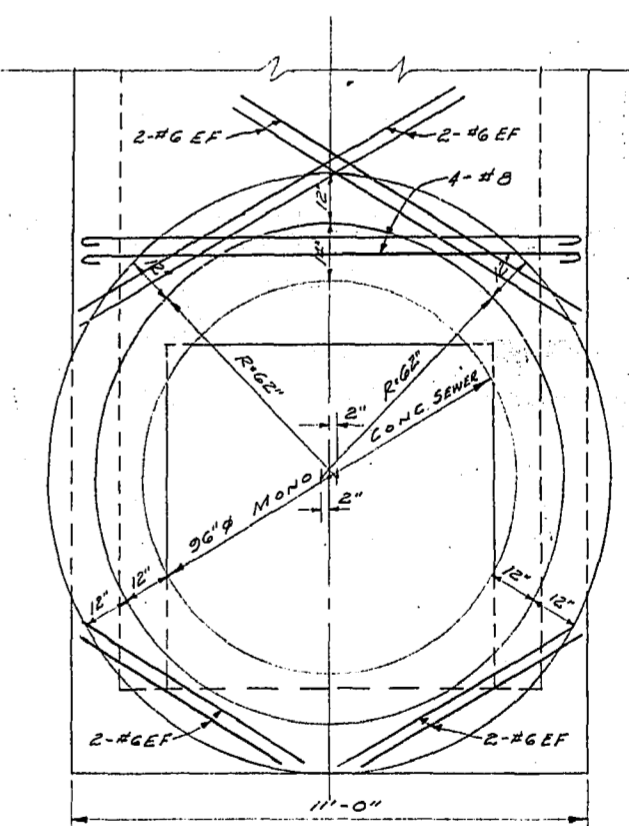
TOP PLAN

SECTION "C-C"

METRO APPROVAL REC'D.

W.W. & N.D. DATE 18-12-64

Approved by: OFFICE OF THE DYKING COMMISSION, 21-12-64, A



SECTION "B-B"

NOTE: ALL STEEL 2" CLEAR

REVISED AS CONSTRUCTED  
BY W.S. DATE JAN. 25/66  
CHECKED BY DATE 25 NOV 66

DIST. CODE # 290-022-360

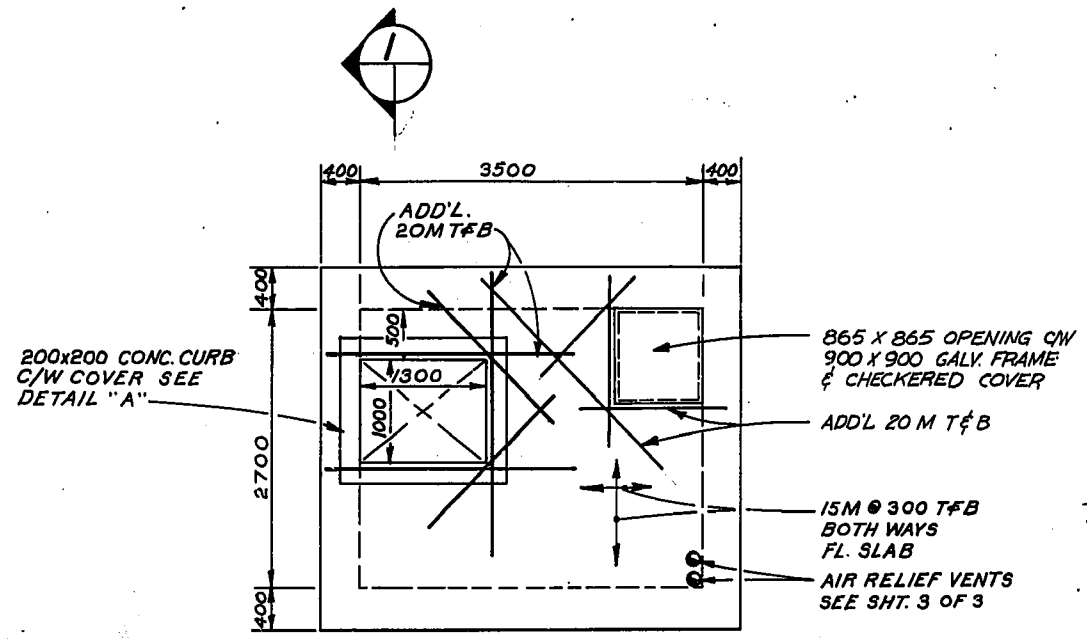
NOTE: DIMENSIONING ACCURATE 1/2"

NOTE:  
LOCATION DRNG  
SEE DRNG. NO. 5C15557  
FILE B-7-K  
C.E.D. 65-64  
P.D. 64-124

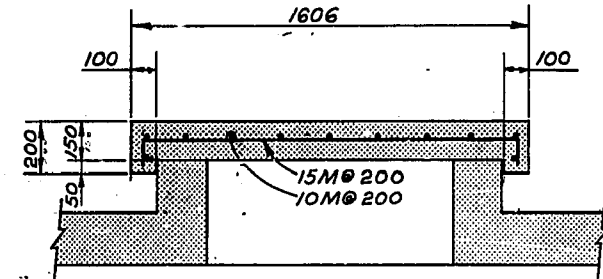


DETAILS OF RENFREW RELIEF GATE CHAMBER

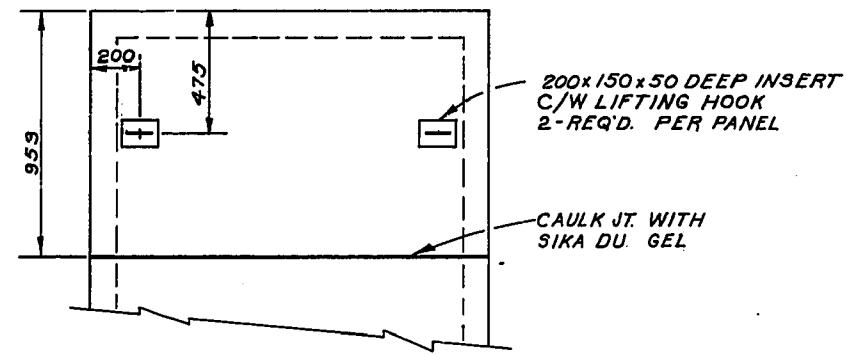
CITY OF WINNIPEG  
ENGINEERING DEPARTMENT  
W. D. HURST, CITY ENGINEER  
J. B. STFIOWSKI, DEPUTY CITY ENGINEER  
DRAWN BY H.R. DATE 25-11-64  
TRACED BY DATE  
CHECKED BY DATE  
APPROVED BY DATE  
SCALE 3/4" = 1'-0"  
DRAWING NO. 5C15558



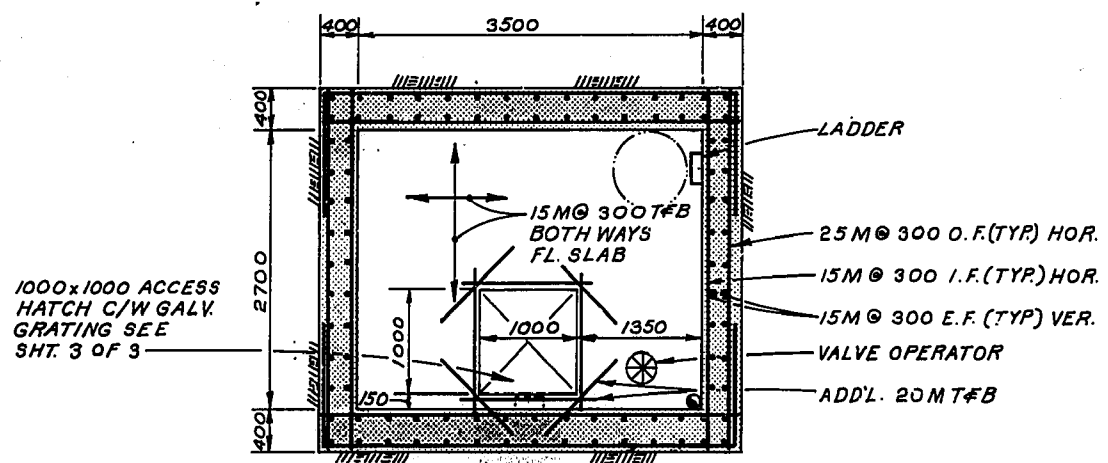
**MAIN FLOOR PLAN**



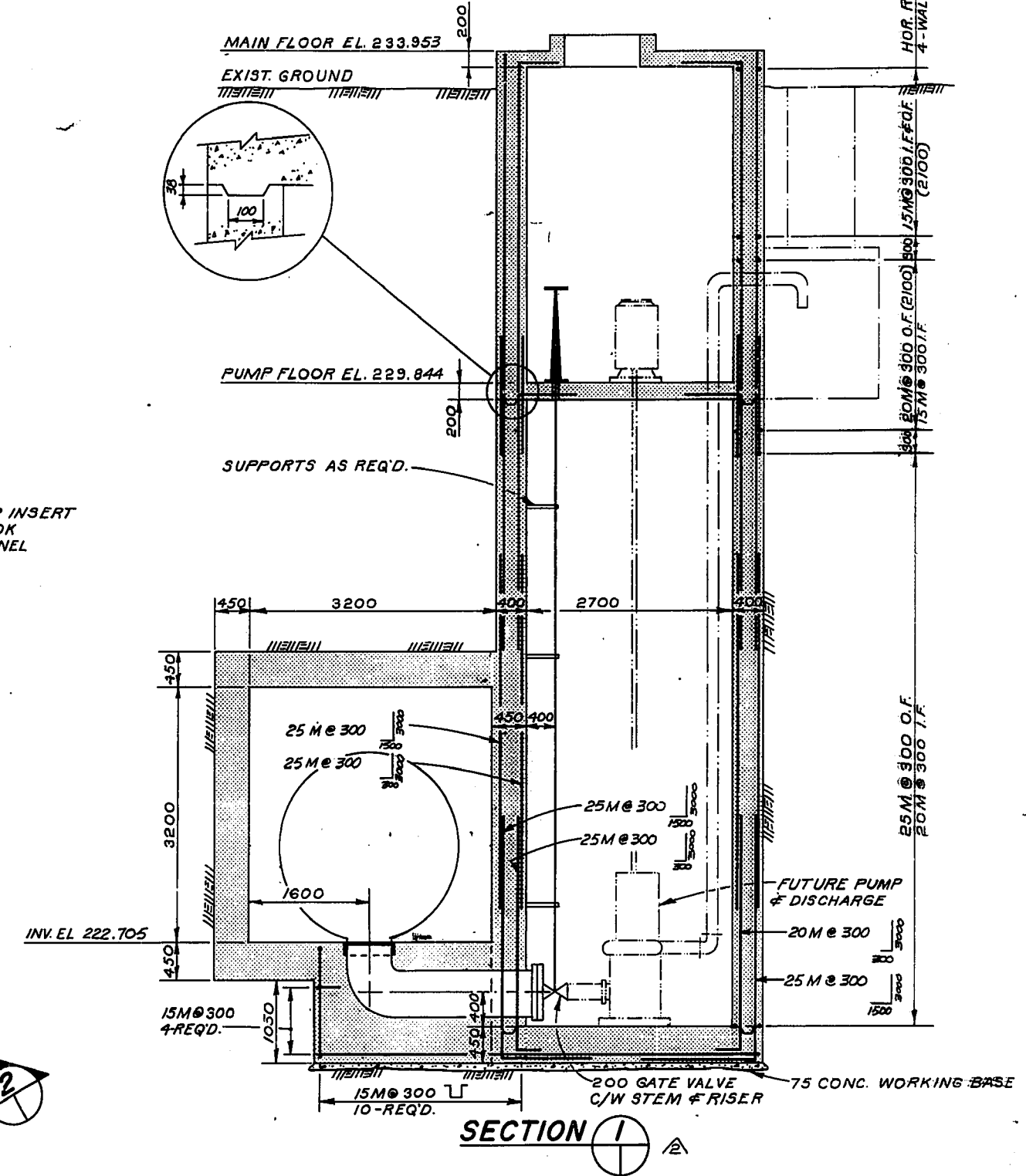
**SECTION**



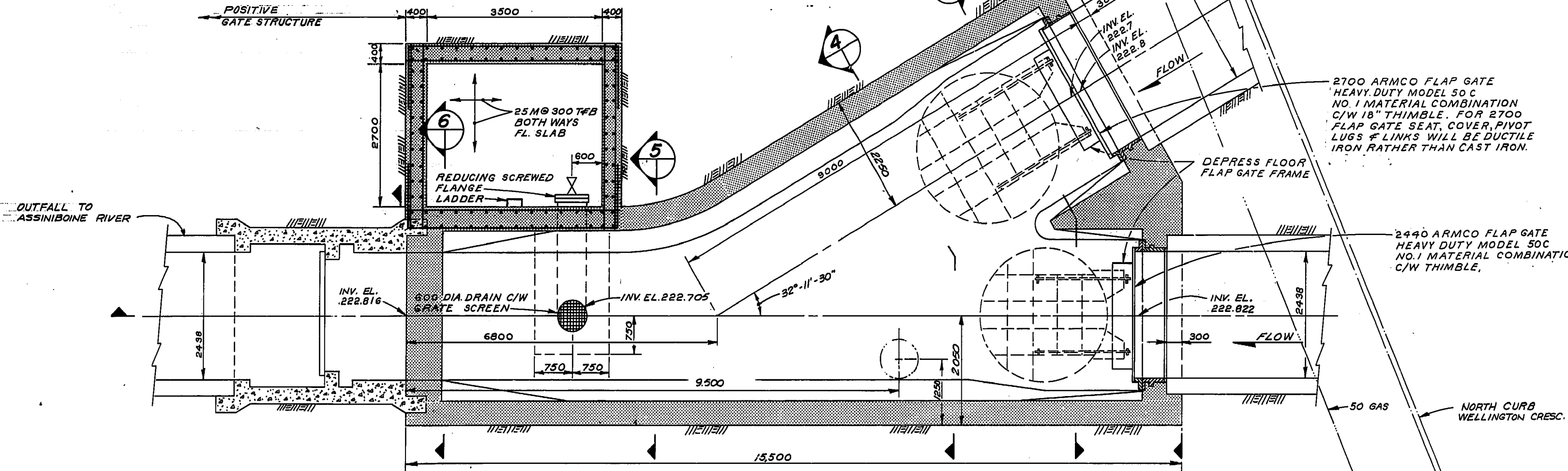
**DETAIL "A"**  
SCALE: 1:20  
2-PANELS REQ'D.



**PUMP FLOOR PLAN**



**SECTION 1**



**SECTION @ EL. 224.500**

NOTE  
AS BUILT APPROVAL  
APPLIES ONLY TO THE  
RELIEF SEWER AND  
RELATED CONNECTIONS.

**AS BUILT**  
APPROVED BY: *[Signature]*  
19/02/11

**LEGEND**

---	WINNIPEG HYDRO STREET LIGHTING (S.L.)	----	CULVERT
---	MANITOBA HYDRO	○	HYDRANT
---	MANITOBA TELEPHONE SYSTEM (M.T.S.)	○	WATER VALVE (W.V.)
---	TRAFFIC SIGNALS (T.S.)	○	GAS VALVE (G.V.)
---	SEWER, STORM RELIEF SEWER (S., S.R.S.)	○	MANHOLE M.T.S. (M)
---	WATERMANS (W.M.)	○	HYDRO (H), SEWER (S)
---	GAS	○	CURB INLET
		○	CATCH BASIN
		○	SURVEY RAR
		○	BRASS PLUG & SURVEY CONTROL (M)
		○	TREE
		○	GUY WIRE
		○	POLE

**WARNING**  
IF POWER EQUIPMENT OR EXPLOSIVES ARE TO BE USED FOR EXCAVATION ON THIS PROJECT THE CONTRACTOR MUST:  
1. NOTIFY THE GAS COMPANY OF THE PROPOSED LOCATION OF EXCAVATION.  
2. TAKE PRECAUTION TO AVOID DAMAGE TO GAS COMPANY INSTALLATIONS.  
SEE PROVINCIAL REGULATION 210/72 FOR DETAILS.

**UNDERGROUND STRUCTURES**  
LOCATIONS OF UNDERGROUND STRUCTURES AS SHOWN ARE BASED ON THE BEST INFORMATION AVAILABLE, BUT NO GUARANTEE IS GIVEN THAT ALL EXISTING UTILITIES ARE EXACT CONFIRMATION OF EXISTENCE AND EXACT LOCATION OF ALL SERVICES MUST BE OBTAINED FROM THE INDIVIDUAL UTILITIES BEFORE PROCEEDING WITH CONSTRUCTION

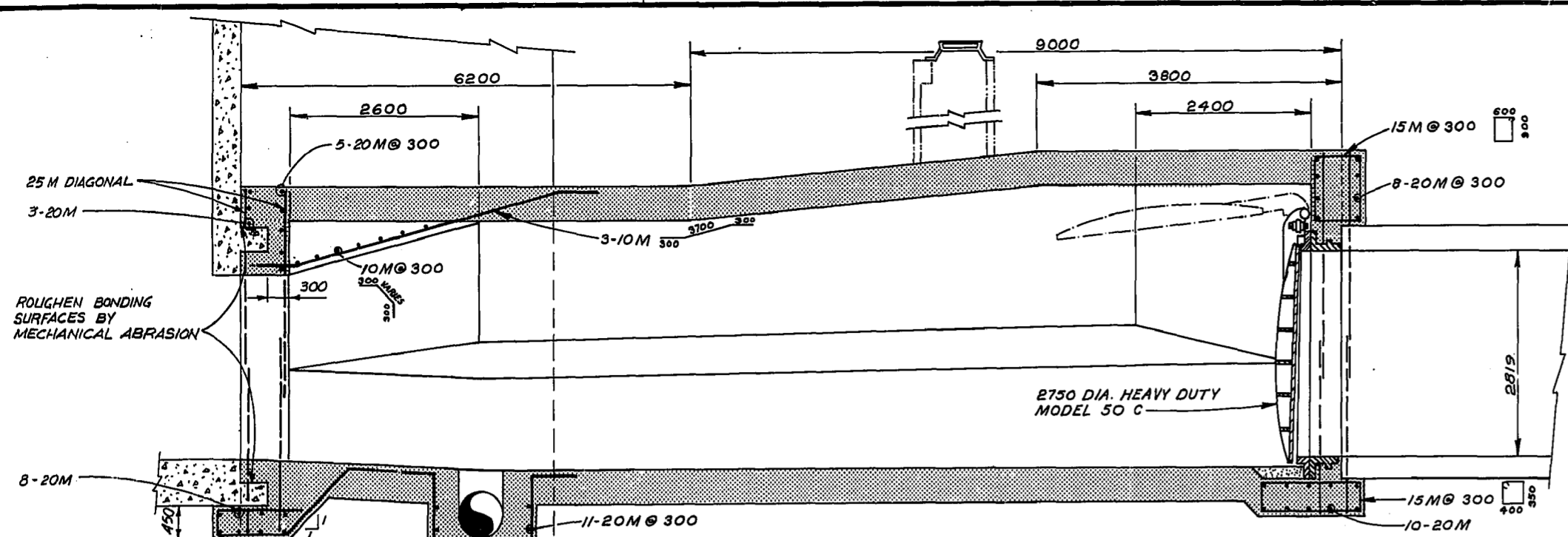
No	REVISIONS	DATE	APP.
2.	MANHOLE SIZE CHANGED	7/10/23	R.B.
1.	DETAILS ADD'D.	7/9-07-04	LDM

**Consulting Engineers & Planners**  
DILLON

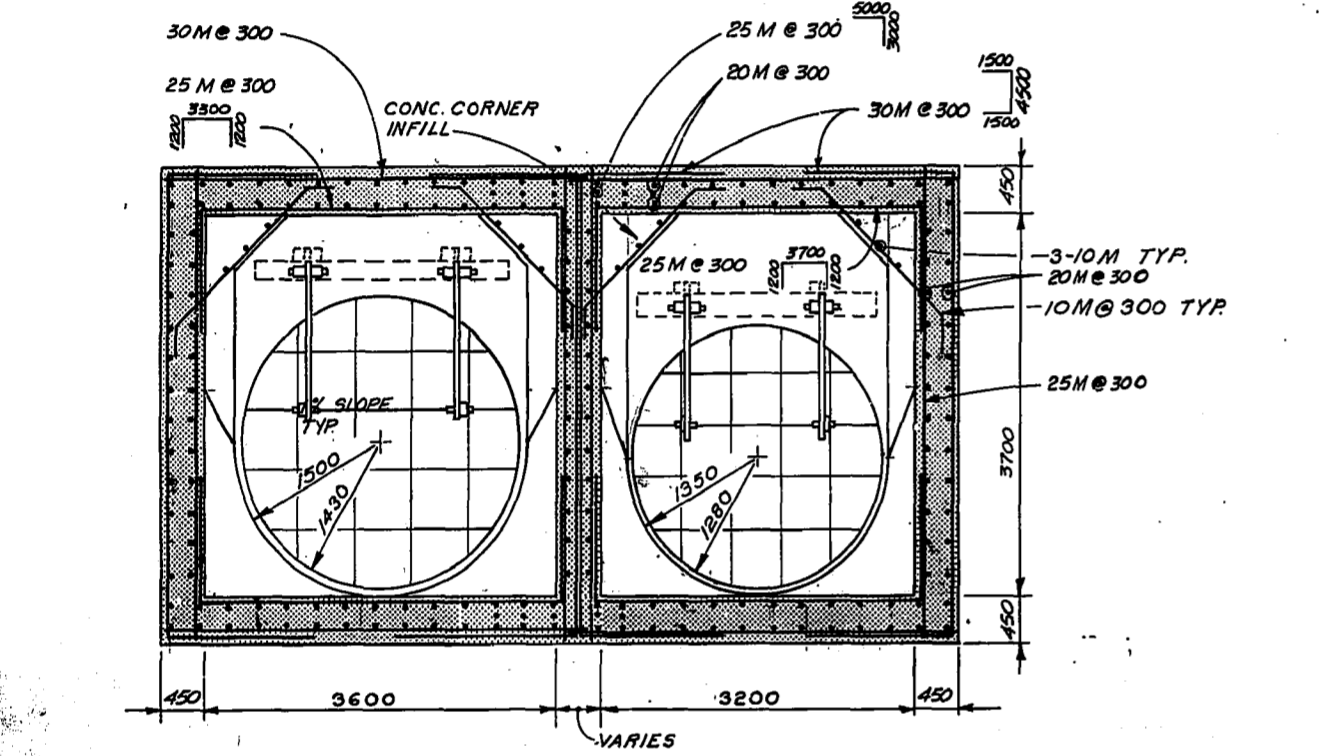
DESIGNED BY: F.A.K. DRAWN BY: C.R.B.  
CHECKED BY: DATE: DATE: DATE:  
APPROVED BY: *[Signature]* DATE: 2/16/11

**THE CITY OF WINNIPEG**  
WORKS & OPERATIONS DEPARTMENT  
WATERWORKS, WASTE & DISPOSAL DIVISION

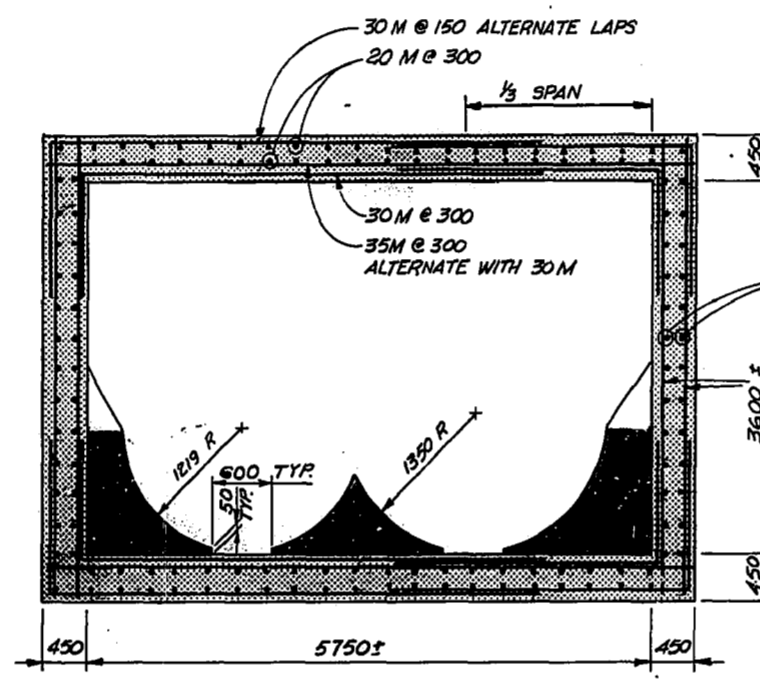
ASH DISTRICT - SEWER RELIEF  
CONTRACT II  
**MANHOLE TYPE II**  
MIDLAND RAILWAY AT WELLINGTON CRESS  
SHT. 1 OF 3  
AUTHOR: *[Signature]* DATE: DATE:  
SCALE: 1:50 DRAWING NO: LD-2541A



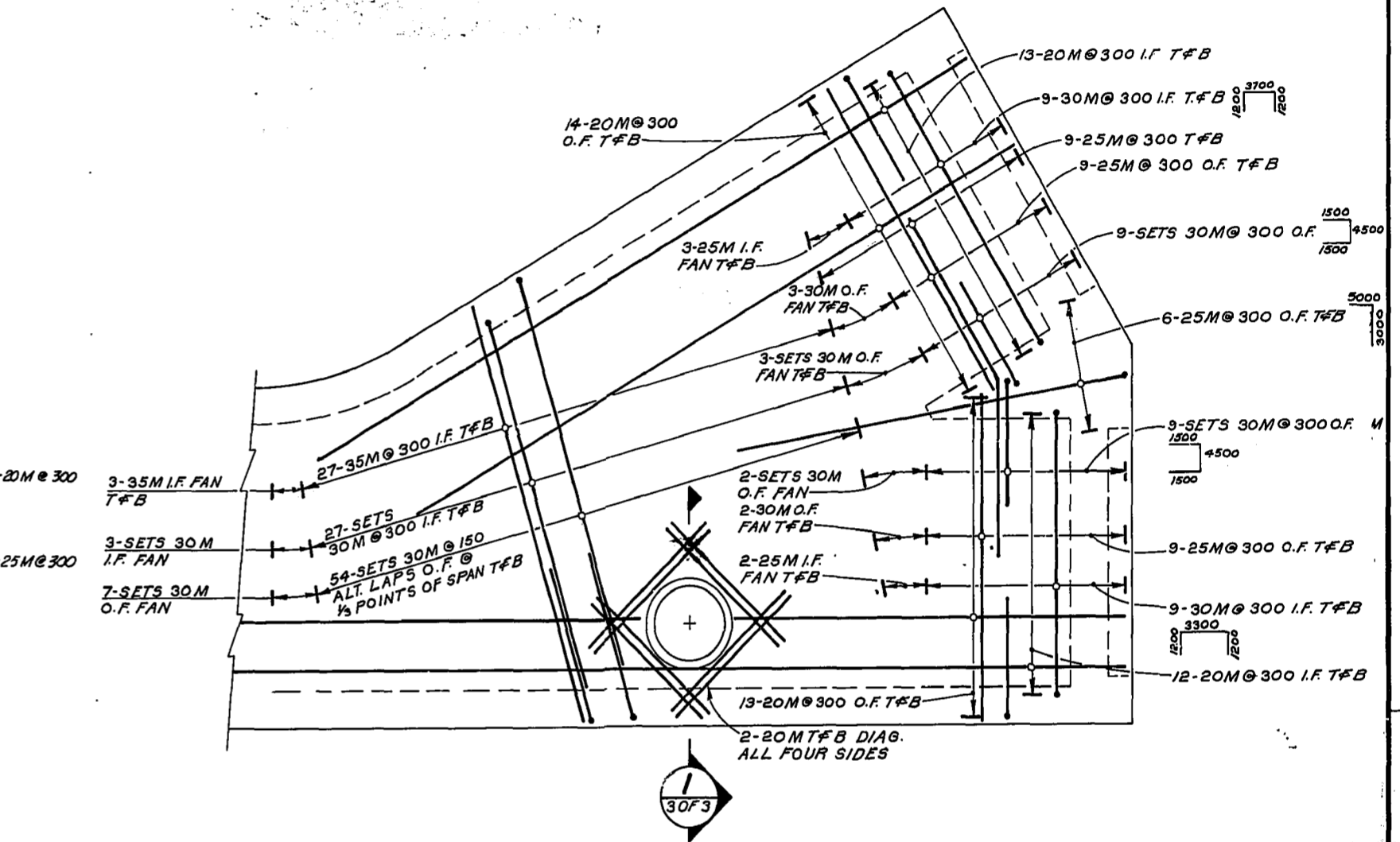
SECTION 2  
1 OF 3



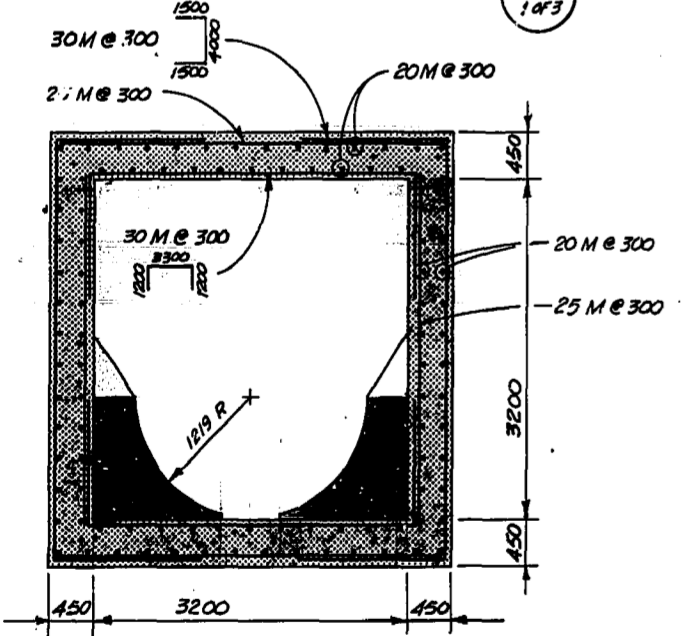
SECTION 3  
1 OF 3



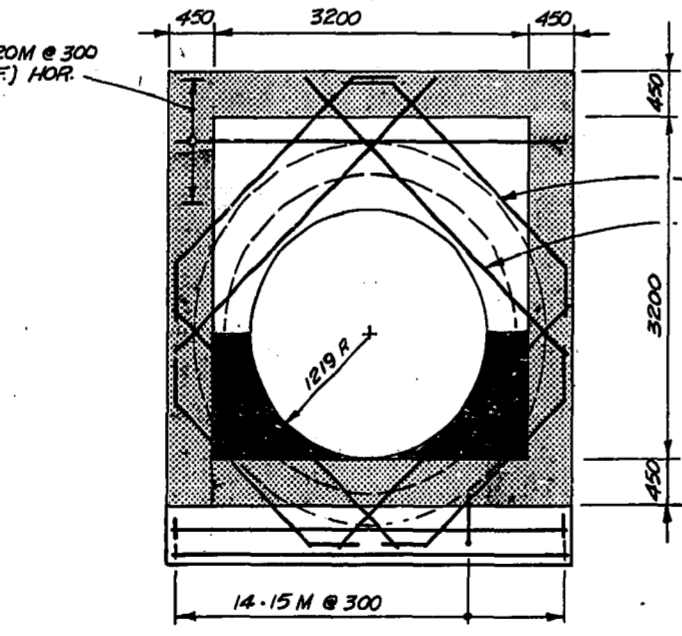
SECTION 4  
1 OF 3



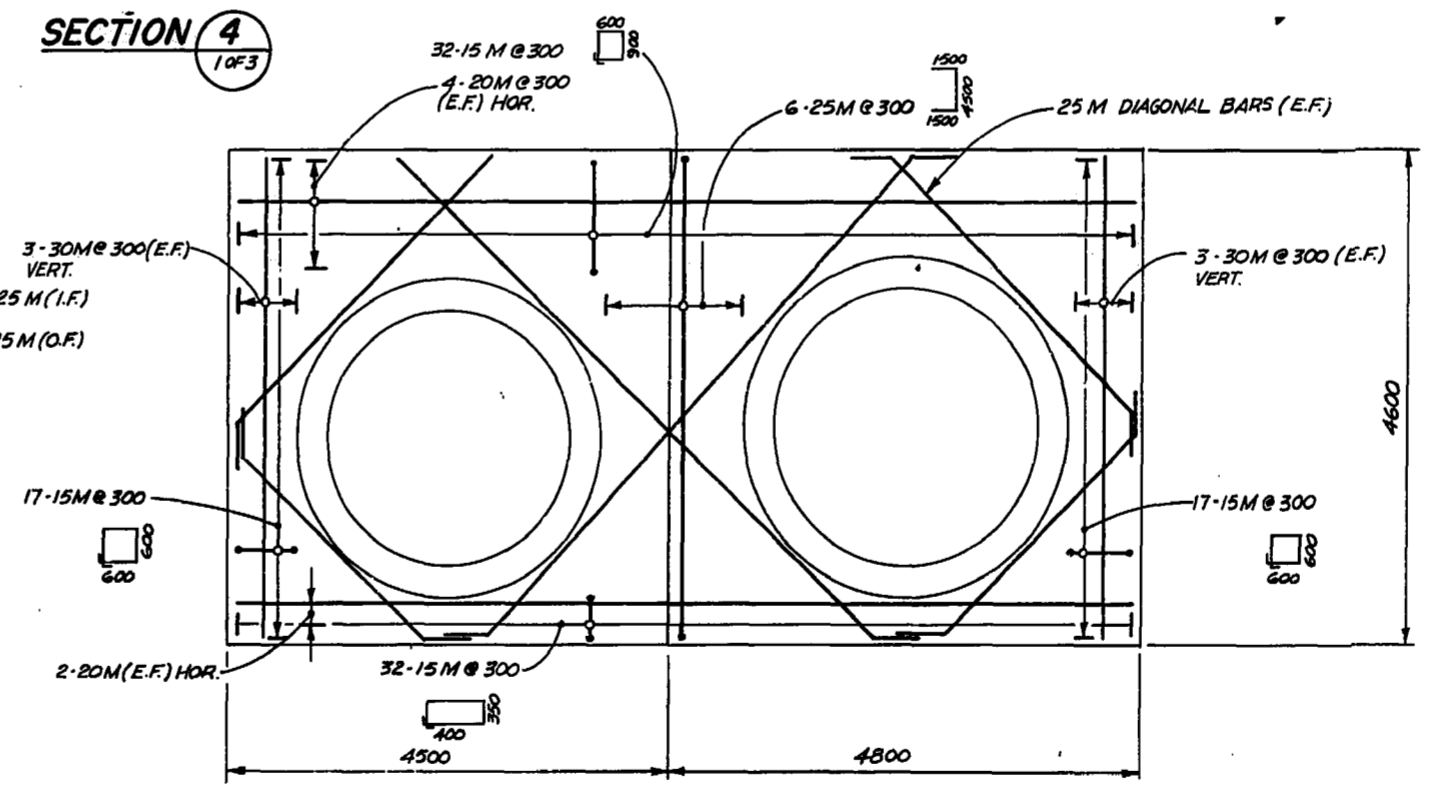
DETAIL A  
SHOWING ROOF & FLOOR SLAB REINFORCING



SECTION 5  
1 OF 3



SECTION 6  
1 OF 3



SECTION 7  
1 OF 3

NOTE  
AS BUILT APPROVAL  
APPLIES ONLY TO THE  
RELIEF SEWER AND  
RELATED CONNECTIONS.

AS BUILT  
APPROVED BY: *Ray...*  
(1/14/81)

**LEGEND**

- WINNIPEG HYDRO STREET LIGHTING (S.L.)
- MANITOBA HYDRO
- MANITOBA TELEPHONE SYSTEM (M.T.S.)
- TRAFFIC SIGNALS (T.S.)
- SEWER, STORM RELIEF SEWER (S., S.R.S.)
- WATERMANS (W.M.)
- GAS

**WARNING**

IF POWER EQUIPMENT OR EXPLOSIVES ARE TO BE USED FOR EXCAVATION ON THIS PROJECT THE CONTRACTOR MUST:

1. NOTIFY THE GAS COMPANY OF THE PROPOSED LOCATION OF EXCAVATION.
2. TAKE PRECAUTION TO AVOID DAMAGE TO GAS COMPANY INSTALLATIONS. SEE PROVINCIAL REGULATION 210/72 FOR DETAILS.

**UNDERGROUND STRUCTURES**

LOCATIONS OF UNDERGROUND STRUCTURES AS SHOWN ARE BASED ON THE BEST INFORMATION AVAILABLE, BUT NO GUARANTEE IS GIVEN THAT ALL EXISTING UTILITIES ARE EXACT CONFIRMATION OF EXISTENCE AND EXACT LOCATION OF ALL SERVICES MUST BE OBTAINED FROM THE INDIVIDUAL UTILITIES BEFORE PROCEEDING WITH CONSTRUCTION

**UNDERGROUND STRUCTURES**

LOCATIONS OF UNDERGROUND STRUCTURES AS SHOWN ARE BASED ON THE BEST INFORMATION AVAILABLE, BUT NO GUARANTEE IS GIVEN THAT ALL EXISTING UTILITIES ARE EXACT CONFIRMATION OF EXISTENCE AND EXACT LOCATION OF ALL SERVICES MUST BE OBTAINED FROM THE INDIVIDUAL UTILITIES BEFORE PROCEEDING WITH CONSTRUCTION

No	REVISIONS	DATE	APP.
1	MANHOLE SIZE CHANGED	79/10/23	R.B.
2	DETAILS ADDED	26 JUN 79	D.M.M.

Consulting Engineers & Planners

DESIGNED BY: \_\_\_\_\_ DRAWN BY: \_\_\_\_\_

CHECKED BY: \_\_\_\_\_ DATE: \_\_\_\_\_

APPROVED BY: *Ray...* DATE: 21/6/79

**THE CITY OF WINNIPEG**

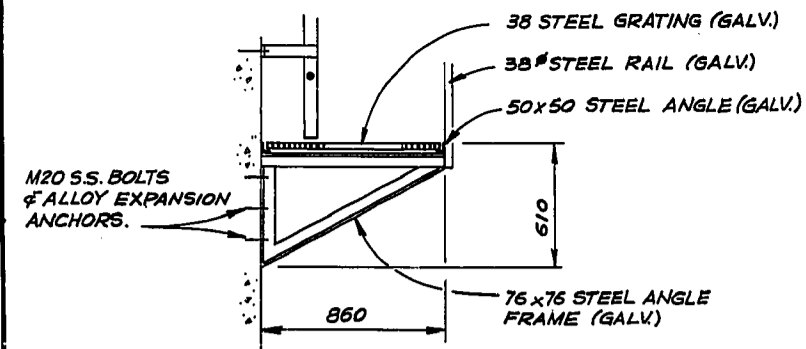
WORKS & OPERATIONS DEPARTMENT  
WATERWORKS, WASTE & DISPOSAL DIVISION

ASH DISTRICT - SEWER RELIEF CONTRACT II  
**MANHOLE TYPE II**  
MIDLAND RAILWAY AT WELLINGTON CRES.  
SHT. 2 OF 3

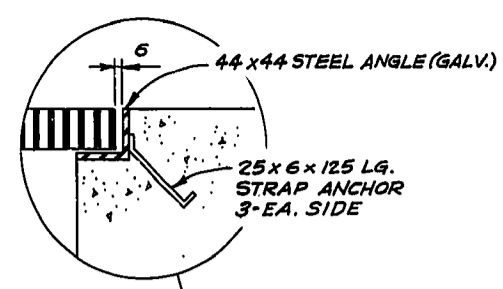
AUTHORIZED BY: *Ray...* DATE: \_\_\_\_\_

SCALE 1:50 DRAWING NO. LD-254 B

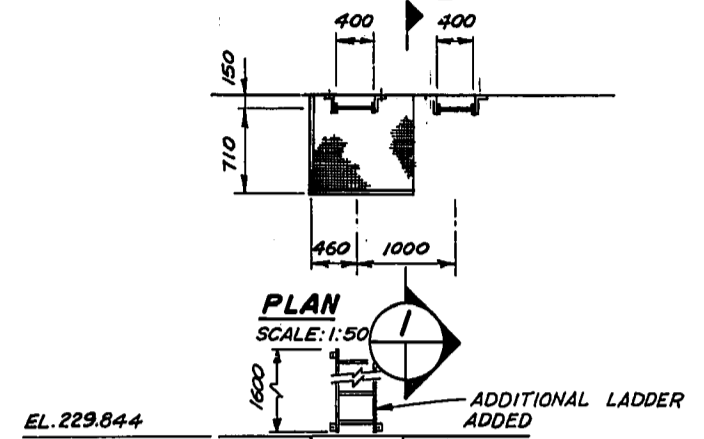
10 M.M.  
9  
8  
7  
6  
5  
4  
3  
2  
1  
0



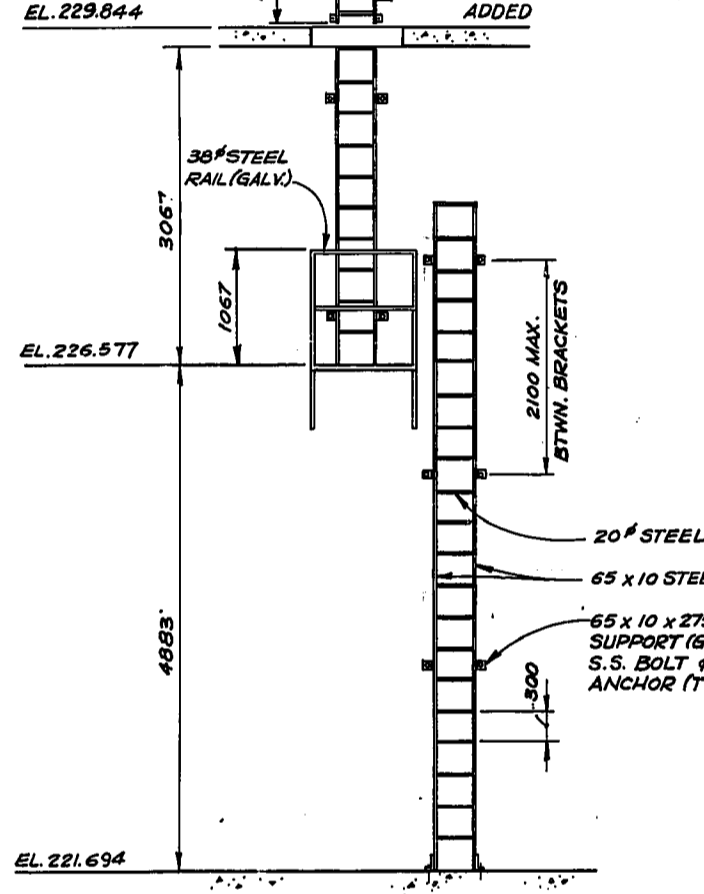
**SECTION 1**  
SCALE: 1:250



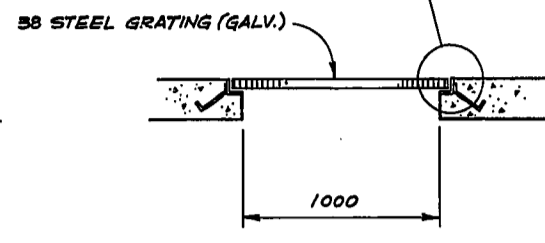
**ACCESS HATCH DETAIL**  
SCALE: 1:250



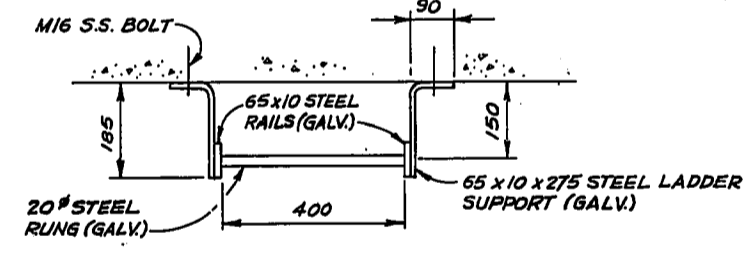
**PLAN**  
SCALE: 1:50



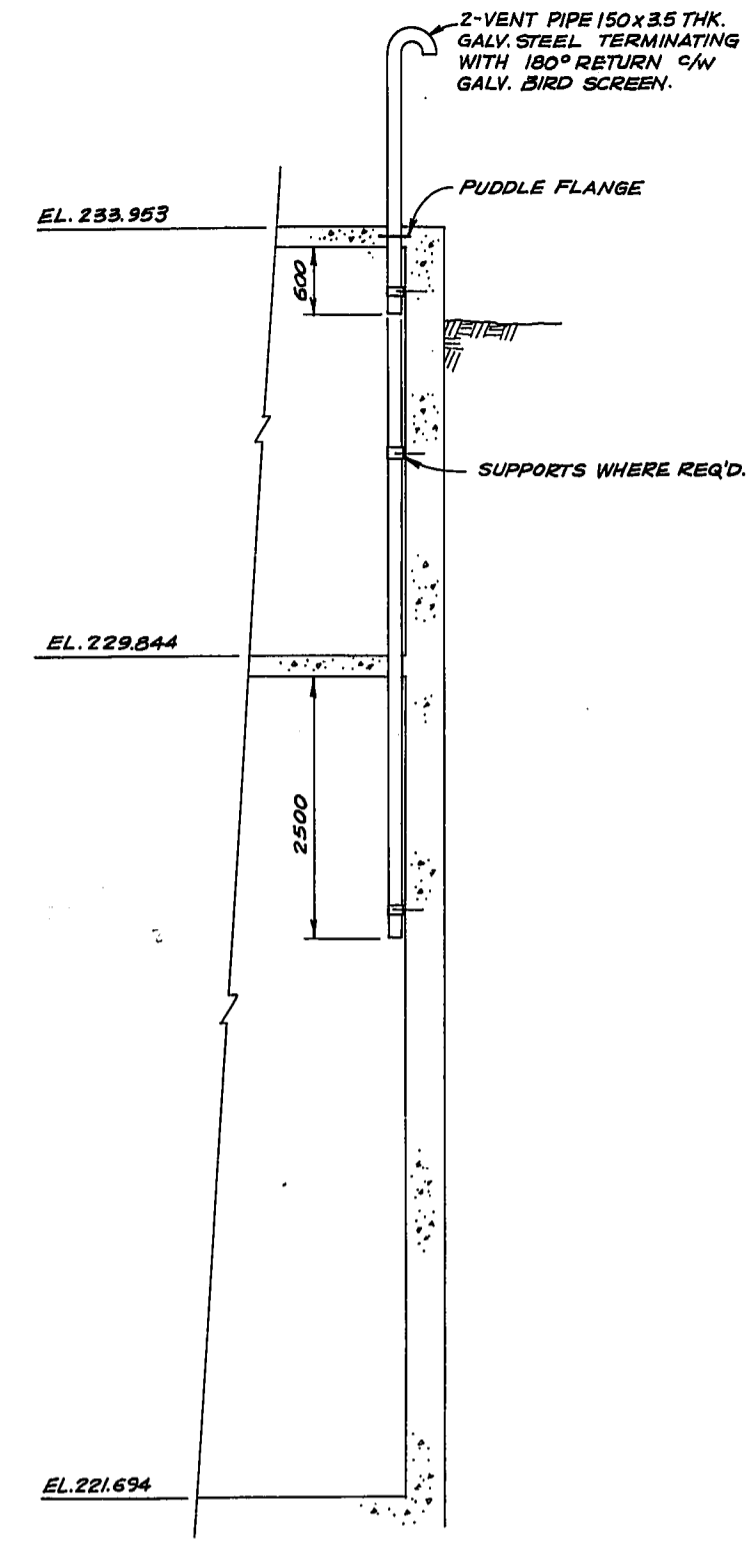
**ELEVATION**  
SCALE: 1:50  
**LADDER NO. 2&3**



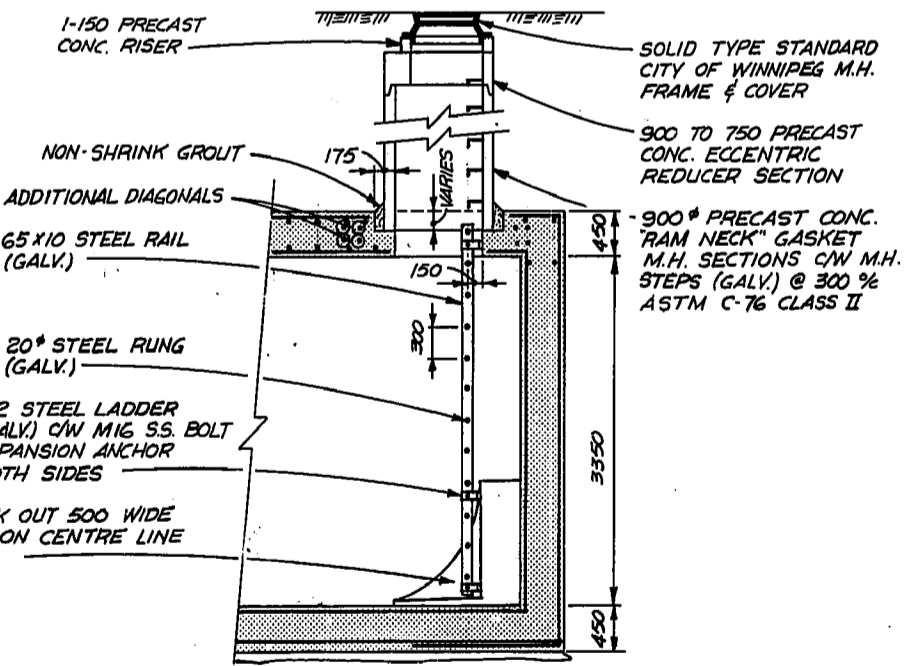
**LADDER NO. 1**  
SCALE: 1:50



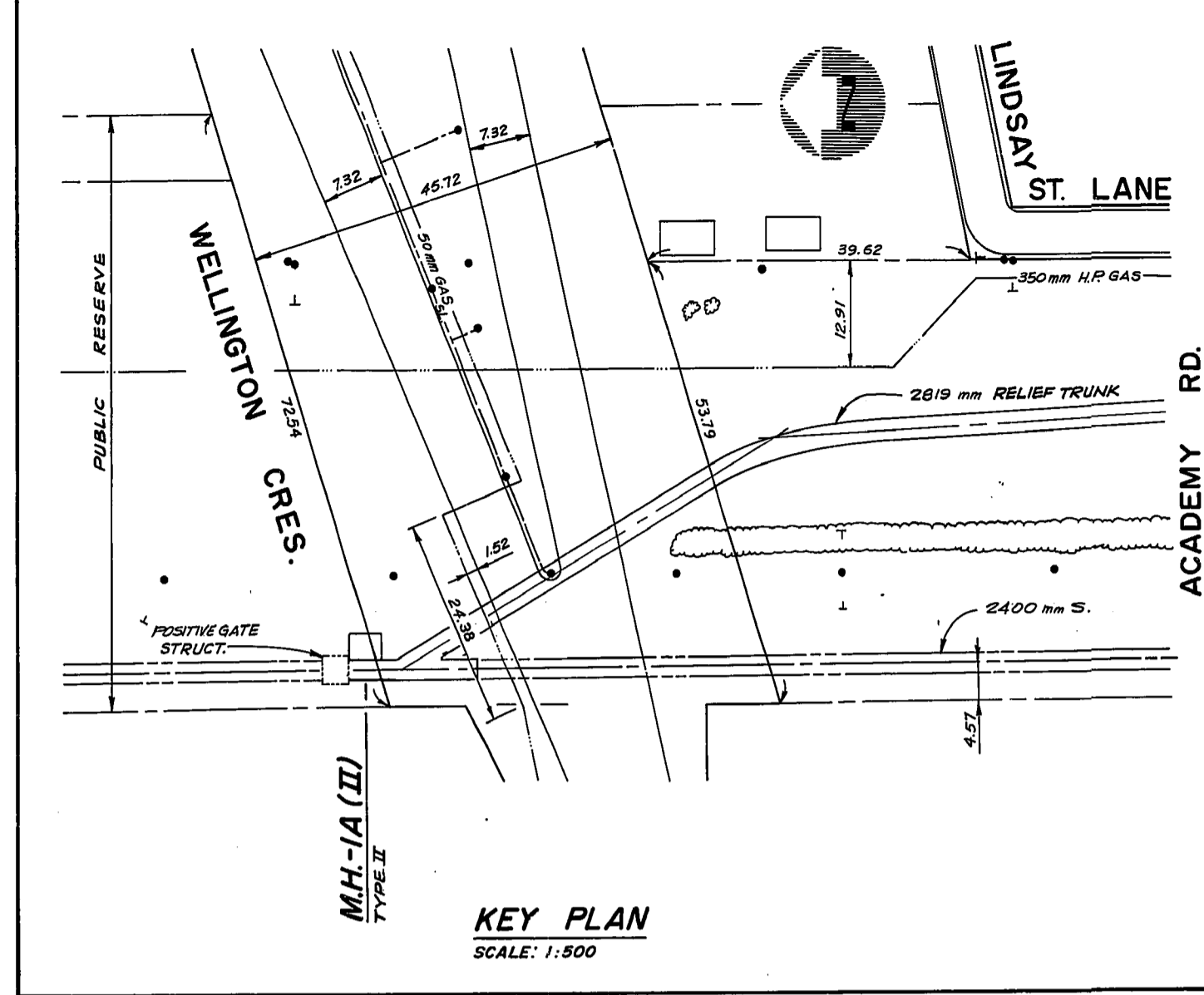
**LADDER DETAILS**  
SCALE: 1:10



**AIR RELIEF VENTS**  
SCALE: 1:50



**SECTION 3**  
SCALE: 1:50



**KEY PLAN**  
SCALE: 1:500

NOTE  
AS BUILT APPROVAL  
APPLIES ONLY TO THE  
RELIEF SEWER AND  
RELATED CONNECTIONS.

**AS BUILT**  
APPROVED BY: *[Signature]*  
19/08/81

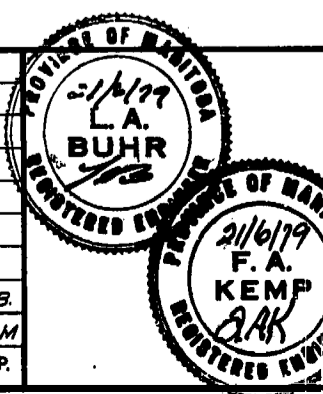
**LEGEND**

---	WINNIPEG HYDRO STREET LIGHTING (S.L.)	---	CULVERT
---	MANITOBA HYDRO	○	HYDRANT
---	MANITOBA TELEPHONE SYSTEM (M.T.S.)	○	WATER VALVE (W.V.)
---	TRAFFIC SIGNALS (T.S.)	○	GAS VALVE (G.V.)
---	SEWER, STORM RELIEF SEWER (S., S.R.S.)	○	MANHOLE M.T.S. (M)
---	WATERMANS (W.M.)	○	MANHOLE (H), SEWER (S)
---	GAS	○	CURB INLET
		○	CATCH BASIN
		○	SURVEY BAR
		○	BRASS PLUG & SURVEY CONTROL (M)
		○	TREE
		○	GUY WIRE
		○	POLE

**WARNING**  
IF POWER EQUIPMENT OR EXPLOSIVES ARE TO BE USED FOR EXCAVATION ON THIS PROJECT THE CONTRACTOR MUST:  
1. NOTIFY THE GAS COMPANY OF THE PROPOSED LOCATION OF EXCAVATION.  
2. TAKE PRECAUTION TO AVOID DAMAGE TO GAS COMPANY INSTALLATIONS.  
SEE PROVINCIAL REGULATION 210/72 FOR DETAILS.

**UNDERGROUND STRUCTURES**  
LOCATIONS OF UNDERGROUND STRUCTURES AS SHOWN ARE BASED ON THE BEST INFORMATION AVAILABLE, BUT NO GUARANTEE IS GIVEN THAT ALL EXISTING UTILITIES ARE SHOWN OR THAT THE GIVEN LOCATIONS ARE EXACT. CONFIRMATION OF EXISTENCE AND EXACT LOCATION OF ALL SERVICES MUST BE OBTAINED FROM THE INDIVIDUAL UTILITIES BEFORE PROCEEDING WITH CONSTRUCTION

No	REVISIONS	DATE	APP.
2	MANHOLE SIZE CHANGED	79/10/23	R.B.
1	DETAILS ADDED	79-06-27	LDM



**Consulting Engineers & Planners**  
DESIGNED BY: F.A.K. DRAWN BY: D.C.G.  
CHECKED BY: DATE: \_\_\_\_\_  
APPROVED BY: *[Signature]* DATE: 21/6/81

**THE CITY OF WINNIPEG**  
WORKS & OPERATIONS DEPARTMENT  
WATERWORKS, WASTE & DISPOSAL DIVISION

ASH DISTRICT - SEWER RELIEF CONTRACT II  
**MANHOLE TYPE II**  
MIDLAND RAILWAY AT WELLINGTON CRES.  
SHT. 3 OF 3  
AUTHORISED BY: *[Signature]* DATE: \_\_\_\_\_  
SCALE: AS NOTED DRAWING NO: LD-254 CA



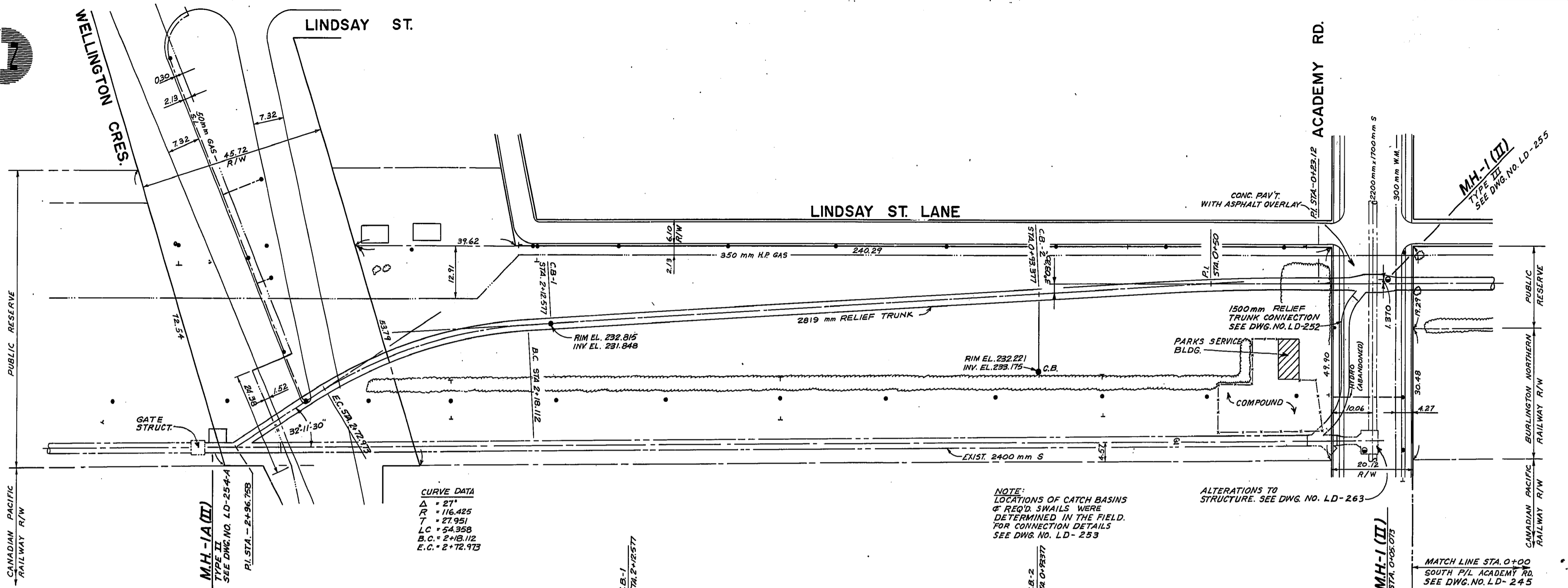
WELLINGTON CRESC.

LINDSAY ST.

LINDSAY ST. LANE

ACADEMY RD.

M.H.-1 (II)  
TYPE III  
SEE DWG. NO. LD-255

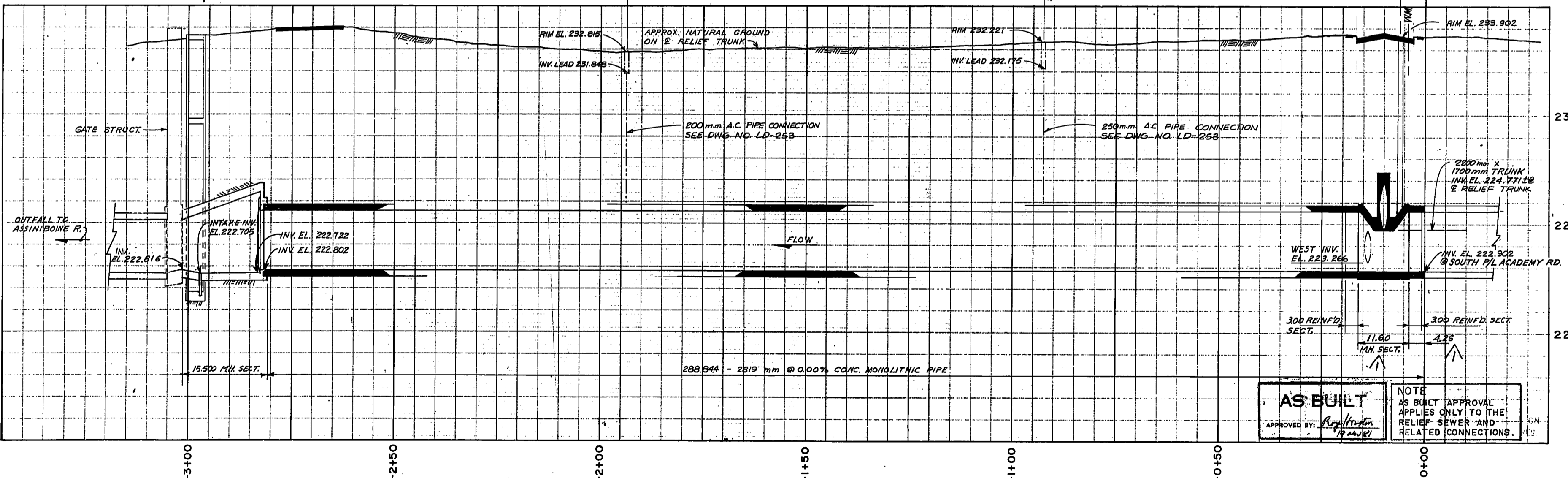


**CURVE DATA**  
 $\Delta = 27^\circ$   
 $R = 116.425$   
 $T = 27.951$   
 $LC = 54.358$   
 $B.C. = 2+18.112$   
 $E.C. = 2+72.973$

**NOTE:**  
 LOCATIONS OF CATCH BASINS  
 & REQ'D SWAILS WERE  
 DETERMINED IN THE FIELD.  
 FOR CONNECTION DETAILS  
 SEE DWG. NO. LD-253

ALTERATIONS TO  
 STRUCTURE. SEE DWG. NO. LD-263

MATCH LINE STA. 0+00  
 SOUTH P/L ACADEMY RD.  
 SEE DWG. NO. LD-245



**AS BUILT**  
 APPROVED BY: [Signature]  
 15/4/79

**NOTE**  
 AS BUILT APPROVAL  
 APPLIES ONLY TO THE  
 RELIEF SEWER AND  
 RELATED CONNECTIONS.

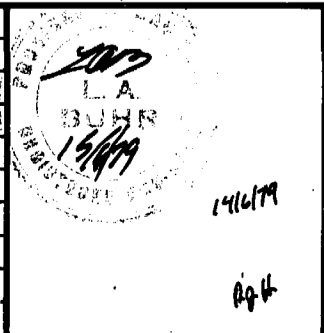
**LEGEND**

--- WINNIPEG HYDRO STREET LIGHTING (S.L.)	--- CULVERT
--- MANITOBA HYDRO	⊕ HYDRANT
--- MANITOBA TELEPHONE SYSTEM (M.T.S.)	⊕ WATER VALVE (W.V.)
--- TRAFFIC SIGNALS (T.S.)	⊕ GAS VALVE (G.V.)
--- SEWER, STORM RELIEF SEWER (S.S.R.S.)	⊕ MANHOLE M.T.S. (M.)
--- WATERMANS (W.M.)	⊕ HYDRO (H), SEWER (S)
--- GAS	⊕ CURB INLET
	⊕ CATCH BASIN
	⊕ SURVEY BAR
	⊕ BRASS PLUG & SURVEY CONTROL (M.)
	⊕ TREE
	⊕ GUY WIRE
	⊕ POLE

**WARNING**  
 IF POWER EQUIPMENT OR EXPLOSIVES ARE TO BE USED FOR EXCAVATION ON THIS PROJECT THE CONTRACTOR MUST:  
 1. NOTIFY THE GAS COMPANY OF THE PROPOSED LOCATION OF EXCAVATION.  
 2. TAKE PRECAUTION TO AVOID DAMAGE TO GAS COMPANY INSTALLATIONS.  
 SEE PROVINCIAL REGULATION 210/72 FOR DETAILS.

**UNDERGROUND STRUCTURES**  
 LOCATIONS OF UNDERGROUND STRUCTURES AS SHOWN ARE BASED ON THE BEST INFORMATION AVAILABLE, BUT NO GUARANTEE IS GIVEN THAT ALL EXISTING UTILITIES ARE SHOWN OR THAT THE GIVEN LOCATIONS ARE EXACT. CONFIRMATION OF EXISTENCE AND EXACT LOCATION OF ALL SERVICES MUST BE OBTAINED FROM THE INDIVIDUAL UTILITIES BEFORE PROCEEDING WITH CONSTRUCTION.

1 M.H. TYPE III LENGTH REV'D.		79-06-04 L.D.M.	
No	REVISIONS	DATE	APP.



**Consulting Engineers & Planners**

DESIGNED BY R. J. H.	DRAWN BY D. W. Z.
CHECKED BY L. D. M.	DATE 30/MAR/79
APPROVED BY [Signature]	DATE 15/4/79

**THE CITY OF WINNIPEG**

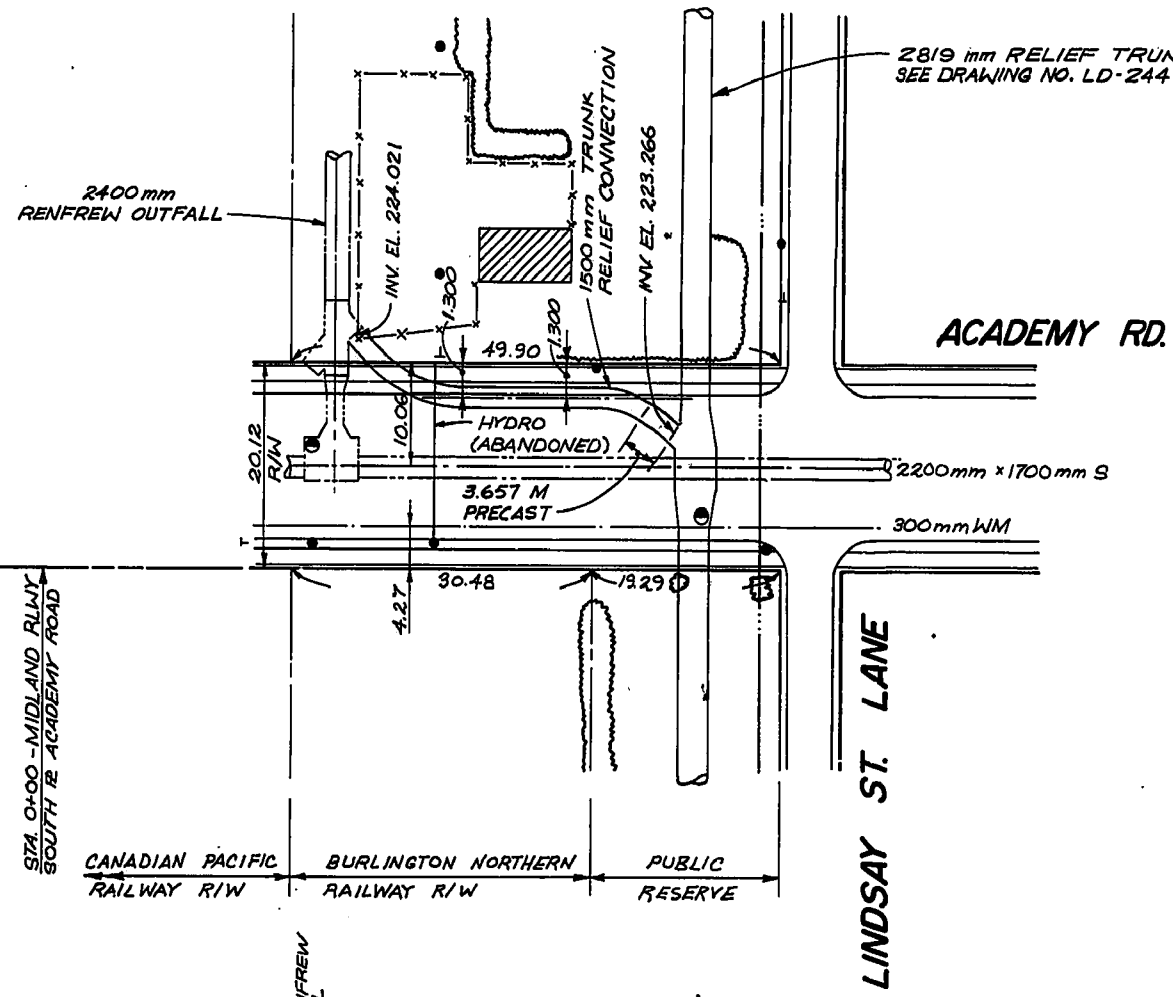
WORKS & OPERATIONS DEPARTMENT  
 WATERWORKS, WASTE & DISPOSAL DIVISION

ASH DISTRICT - SEWER RELIEF CONTRACT II  
 MIDLAND RAILWAY ACADEMY RD. TO WELLINGTON CRESCENT STA 0+00 TO STA. -3+01.60

AUTHORIZED BY: [Signature]  
 DATE: [Blank]

SCALE: HOR. 1:500  
 VER. 1:100

DRAWING NO. LD-244



**CURVE #1**

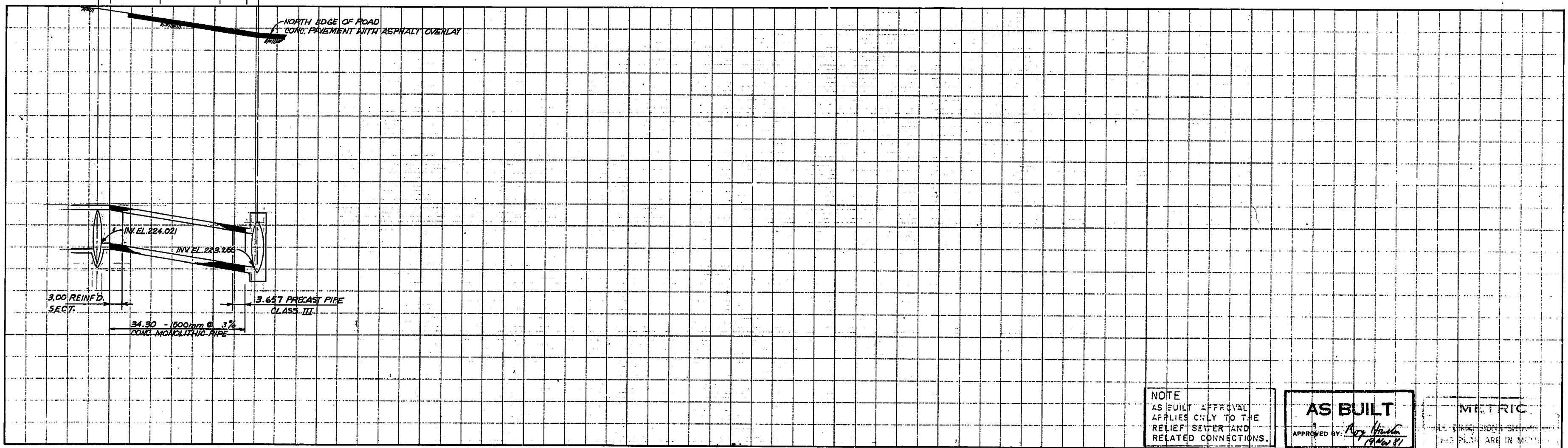
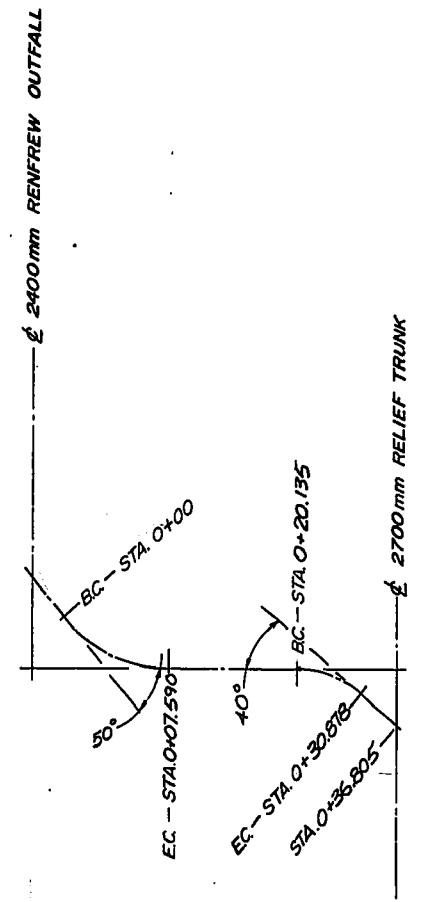
$\Delta = 49^\circ 29' 10''$   
 $R = 8.788$   
 $T = 4.050$   
 $LC = 7.590$

BC = 0+00  
 EC = 0+07.590

**CURVE #2**

$\Delta = 40^\circ 02' 44''$   
 $R = 15.370$   
 $T = 5.601$   
 $LC = 10.743$

BC = 0+20.135  
 EC = 0+30.878



**LEGEND**

- WINNIPEG HYDRO STREET LIGHTING (S.L.)
- MANITOBA HYDRO
- MANITOBA TELEPHONE SYSTEM (M.T.S.)
- TRAFFIC SIGNALS (T.S.)
- SEWER, STORM RELIEF SEWER (S., S.R.S.)
- WATERMANS (W.M.)
- GAS

- CULVERT
- HYDRANT
- WATER VALVE (W.V.)
- GAS VALVE (G.V.)
- MANHOLE M.T.S. (M)
- HYDRO (H), SEWER (S)
- CURB INLET
- CATCH BASIN
- SURVEY BAR
- BRASS PLUG & SURVEY CONTROL (M)
- TREE
- GUY WIRE
- POLE

**WARNING**

IF POWER EQUIPMENT OR EXPLOSIVES ARE TO BE USED FOR EXCAVATION ON THIS PROJECT THE CONTRACTOR MUST:

- NOTIFY THE GAS COMPANY OF THE PROPOSED LOCATION OF EXCAVATION.
- TAKE PRECAUTION TO AVOID DAMAGE TO GAS COMPANY INSTALLATIONS.

SEE PROVINCIAL REGULATION 210/72 FOR DETAILS.

**UNDERGROUND STRUCTURES**

LOCATIONS OF UNDERGROUND STRUCTURES AS SHOWN ARE BASED ON THE BEST INFORMATION AVAILABLE, BUT NO GUARANTEE IS GIVEN THAT ALL EXISTING UTILITIES ARE SHOWN OR THAT THE GIVEN LOCATIONS ARE EXACT. CONFIRMATION OF EXISTENCE AND EXACT LOCATION OF ALL SERVICES MUST BE OBTAINED FROM THE INDIVIDUAL UTILITIES BEFORE PROCEEDING WITH CONSTRUCTION.

No	REVISIONS	DATE	APP.

DESIGNED BY: R.J.H.

CHECKED BY: L.D.M.

APPROVED BY: *[Signature]*

DRAWN BY: N.W.F.

DATE: 12/JUN/79

DATE: 17/6/79

PROVINCE OF MANITOBA  
L.A. BUHR  
REGISTERED ENGINEER

PROVINCE OF MANITOBA  
R. J. HOUSTON  
REGISTERED ENGINEER

**THE CITY OF WINNIPEG**

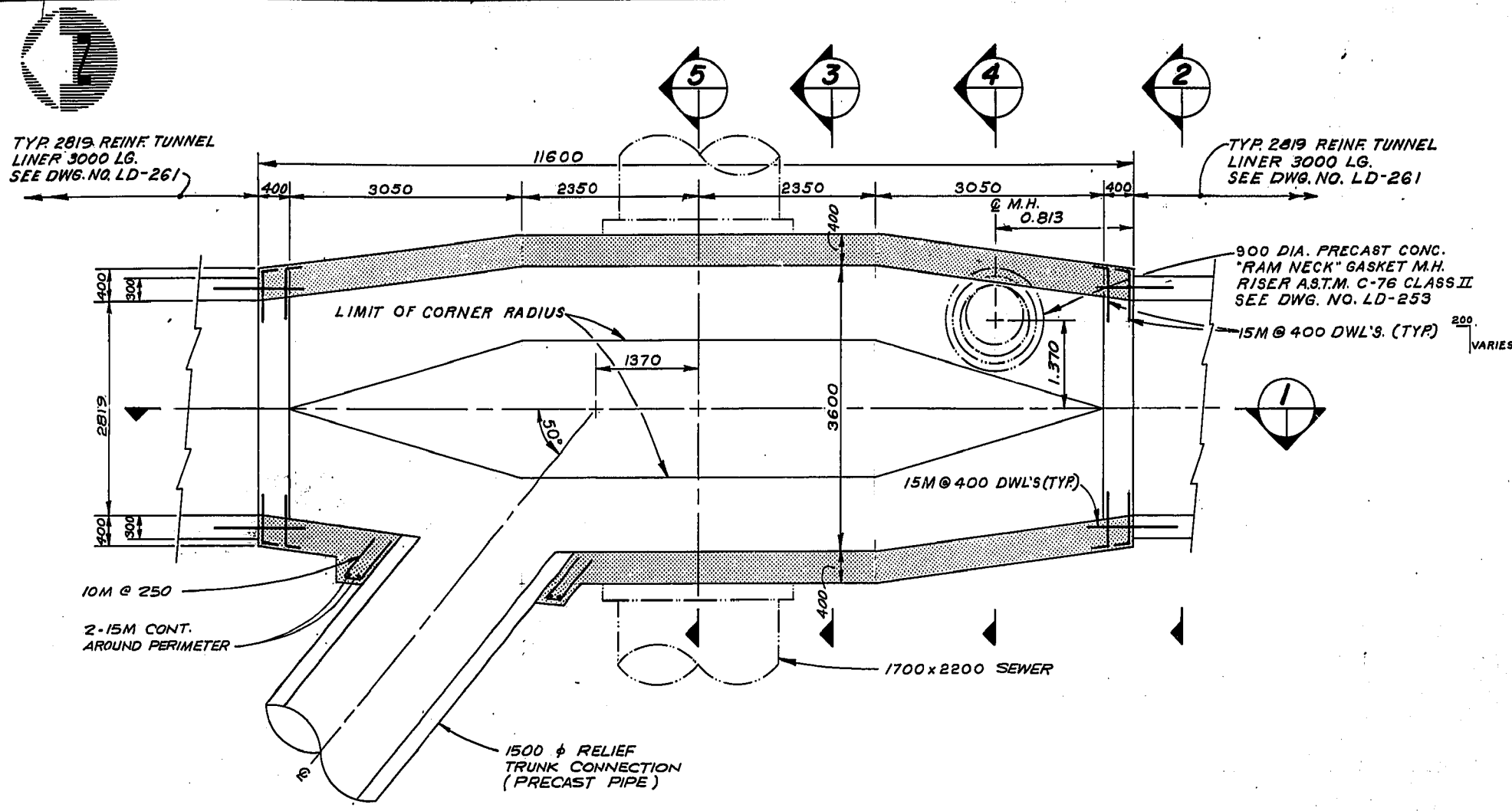
WORKS & OPERATIONS DEPARTMENT  
WATERWORKS, WASTE & DISPOSAL DIVISION

ASH DISTRICT - SEWER RELIEF CONTRACT II  
ACADEMY ROAD  
TRUNK RELIEF CONNECTION  
MIDLAND RAILWAY

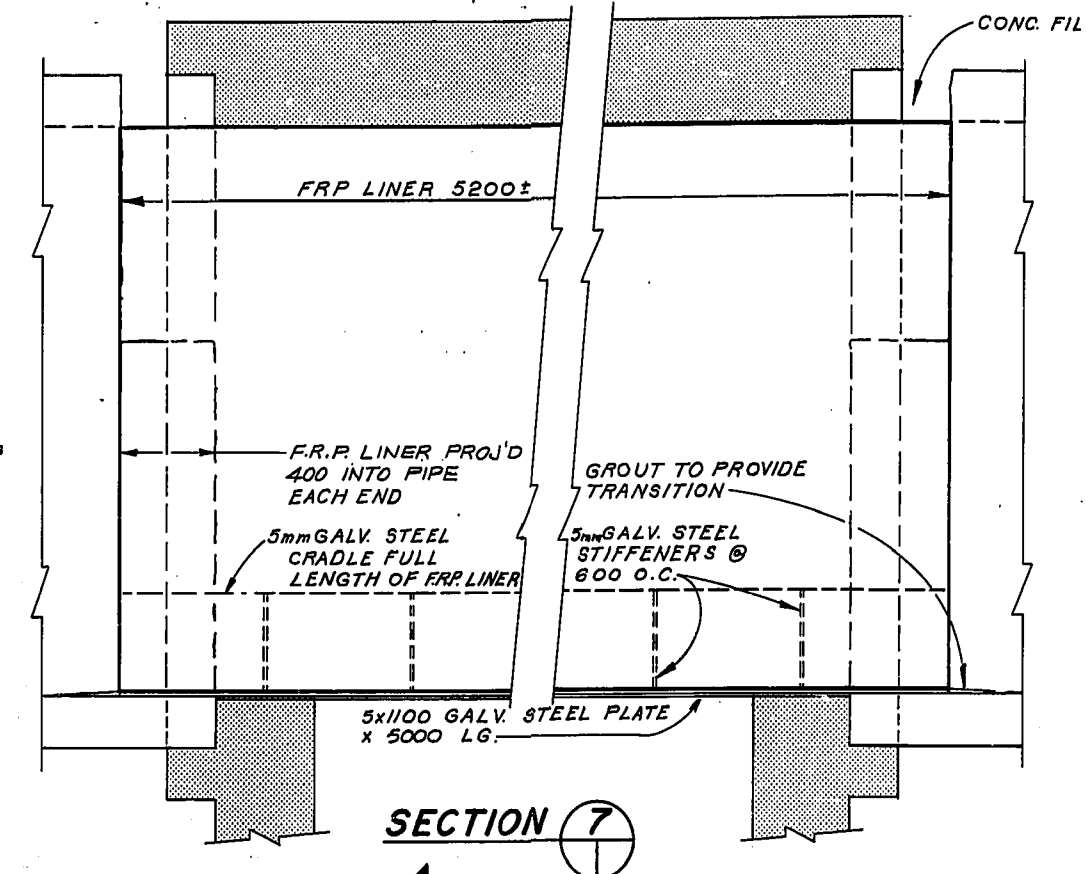
AUTHORIZED BY: *[Signature]*

SCALE: HOR. 1:500  
VER. 1:100

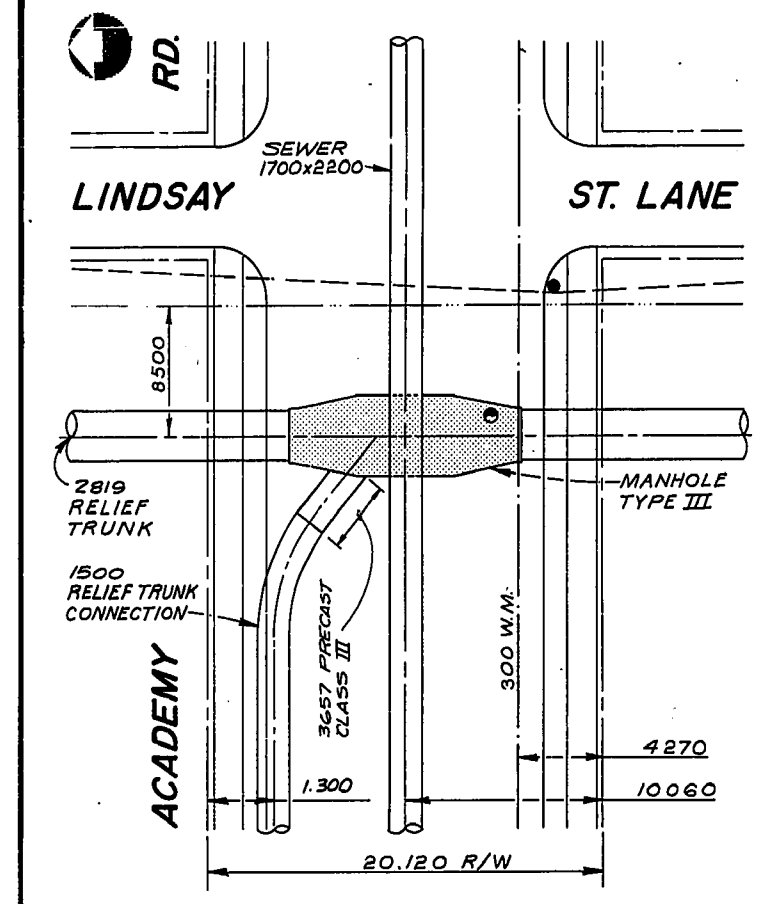
DRAWING NO. LD-252



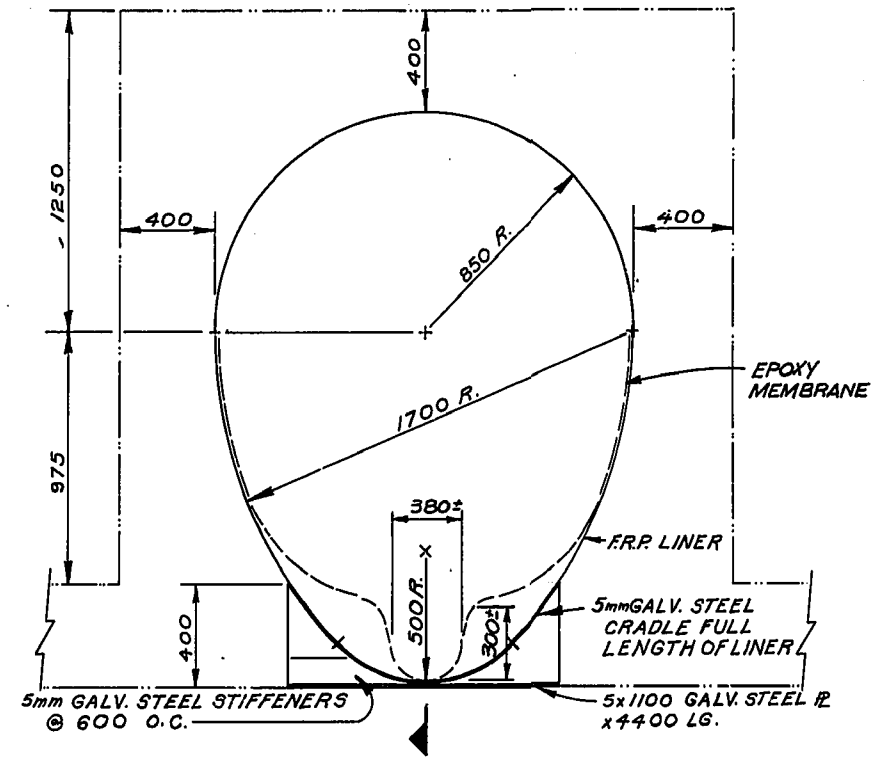
PLAN



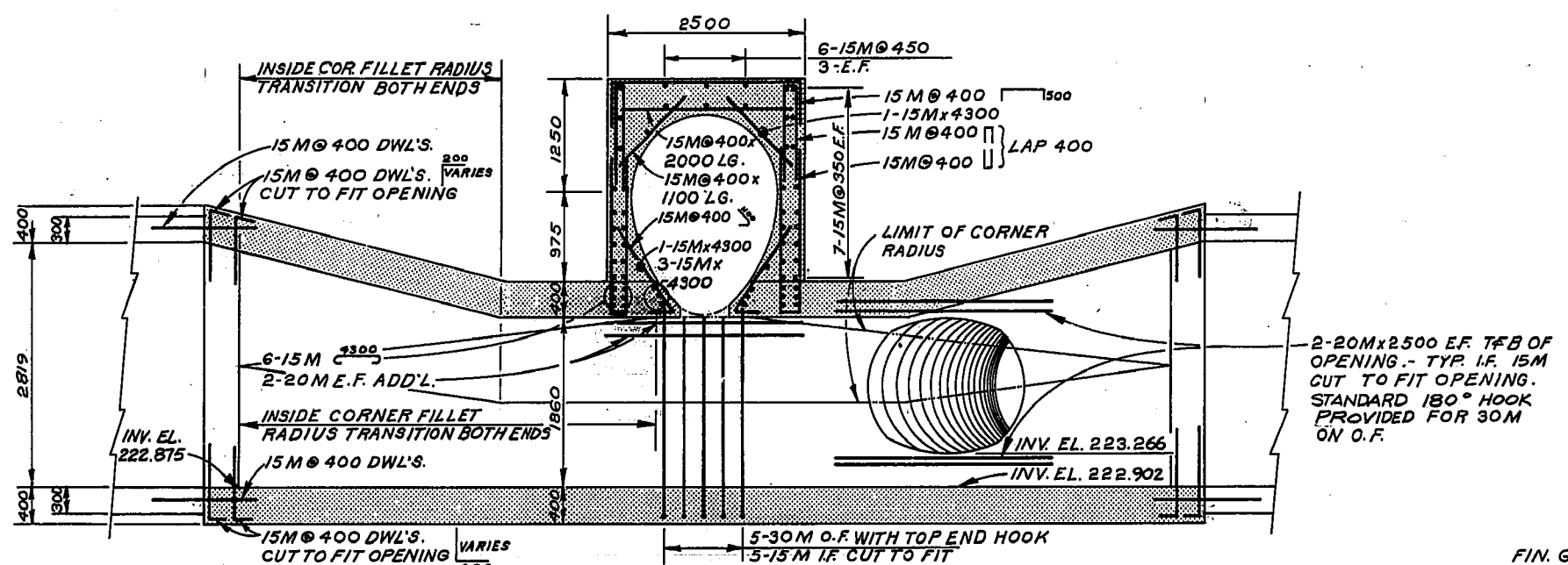
SECTION 7



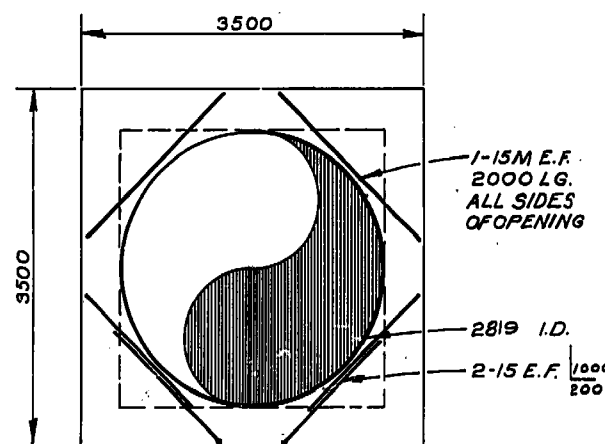
KEY PLAN



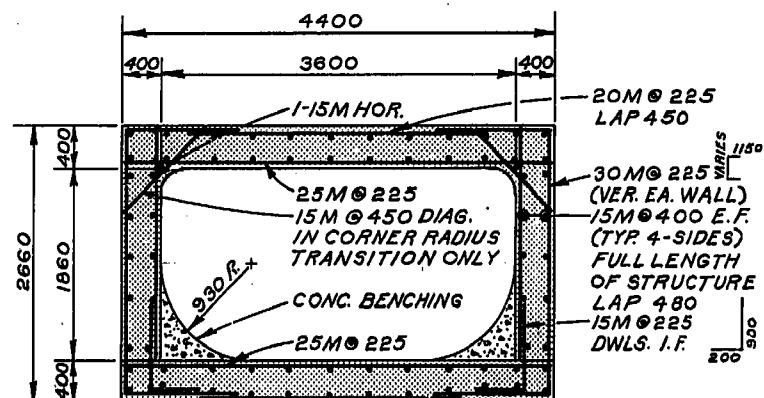
SECTION 8



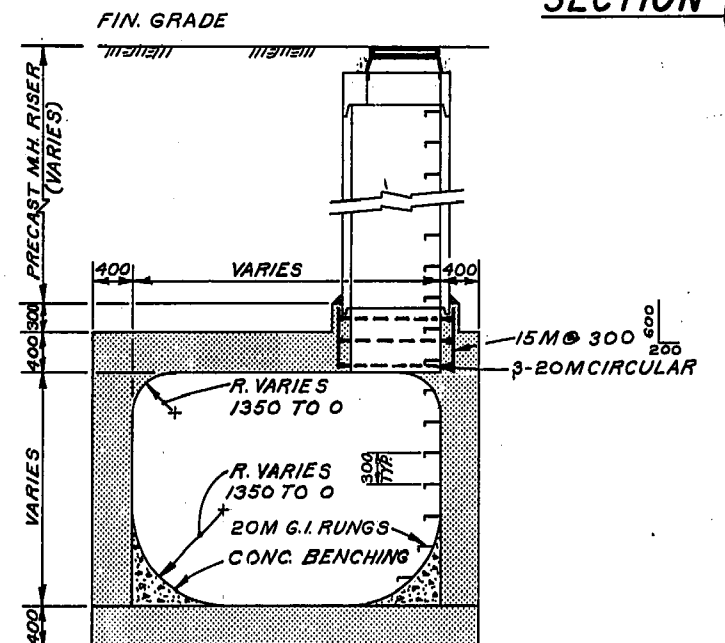
SECTION 1



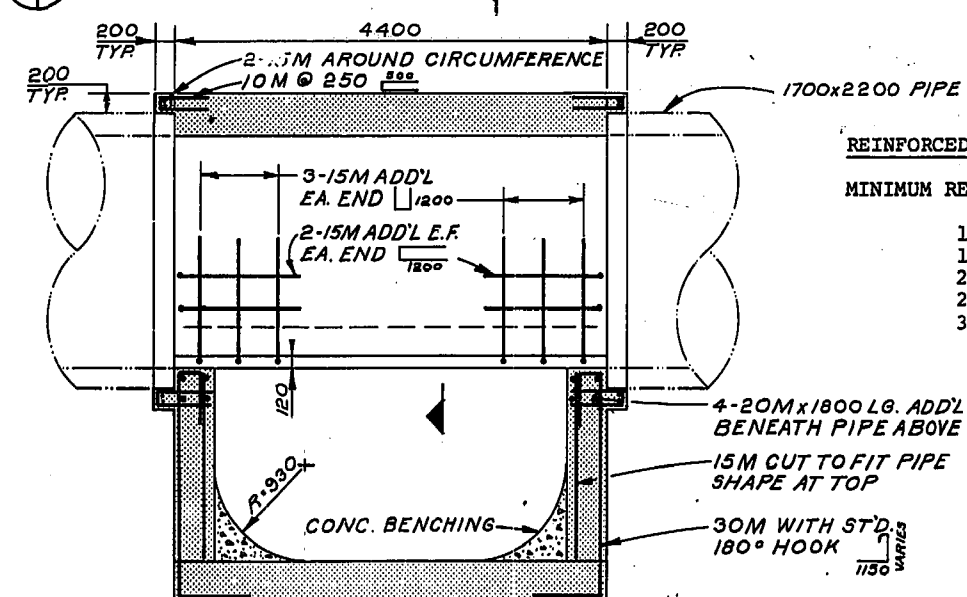
SECTION 2



SECTION 3



SECTION 4



SECTION 5

- NOTES:
- STRUCTURAL STEEL CRADLE, STIFFENERS AND BASE PLATE WERE FABRICATED FROM STRUCTURAL QUALITY STEEL IN ACCORDANCE WITH THE REQUIREMENTS OF CSA G40.20-M1978 GRADE 350G. WELDING WAS IN ACCORDANCE WITH CSA W59-1977. THE FABRICATED SECTION WAS HOT DIP GALVANIZED IN ACCORDANCE WITH CSA G164-1965 WITH A MINIMUM ZINC COATING OF 6.103 GRAMS PER 10000 m<sup>2</sup> OF SURFACE AREAS (2.0 oz per ft<sup>2</sup>).
  - THE FIBRE REINFORCED PLASTIC (FRP) LINER:
    - MATERIAL - CHEMICAL RESISTANT POLYESTER RESIN
    - MINIMUM 800 g PER M<sup>2</sup> (24 oz. PER SQ. YARD)
    - WOVEN ROVING FIBREGLASS REINFORCEMENT

- PHYSICAL DIMENSIONS
- CROSS-SECTION AND LENGTH AS SHOWN
  - MINIMUM 6 mm THICK WITH 4 PILES OF WR REINFORCEMENT THROUGHOUT LAYED UP WITH PRINCIPAL FIBRE DIRECTION AROUND THE CIRCUMFERENCE OF THE LINER.

REINFORCED LAP LENGTHS

MINIMUM REINFORCED LAPS UNLESS SHOWN OTHERWISE

10M	450
15M	630
20M	770
25M	1180
30M	1650

REINFORCED LAP LENGTHS

MINIMUM REINFORCED LAPS UNLESS SHOWN OTHERWISE

10M	450
15M	630
20M	770
25M	1180
30M	1650

AS BUILT

APPROVED BY: [Signature]

NOTE: AS BUILT APPROVAL APPLIES ONLY TO THE RELIEF SEWER AND RELATED CONNECTIONS.

LEGEND

---	WINNIPEG HYDRO STREET LIGHTING (S.L.)
---	MANITOBA HYDRO
---	MANITOBA TELEPHONE SYSTEM (M.T.S.)
---	TRAFFIC SIGNALS (T.S.)
---	SEWER, STORM RELIEF SEWER (S.,S.R.S.)
---	WATERMANS (W.M.)
---	GAS
---	CULVERT
○	HYDRANT
○	WATER VALVE (W.V.)
○	GAS VALVE (G.V.)
○	MANHOLE M.T.S. (M)
○	HYDRO (H), SEWER (S)
○	CURB INLET
○	CATCH BASIN
○	SURVEY BAR
○	BRASS PLUG & SURVEY CONTROL (M)
○	TREE
○	GUY WIRE
○	POLE

**WARNING**

IF POWER EQUIPMENT OR EXPLOSIVES ARE TO BE USED FOR EXCAVATION ON THIS PROJECT THE CONTRACTOR MUST:

- NOTIFY THE GAS COMPANY OF THE PROPOSED LOCATION OF EXCAVATION.
- TAKE PRECAUTION TO AVOID DAMAGE TO GAS COMPANY INSTALLATIONS.

SEE PROVINCIAL REGULATION 210/72 FOR DETAILS.

**UNDERGROUND STRUCTURES**

LOCATIONS OF UNDERGROUND STRUCTURES AS SHOWN ARE BASED ON THE BEST INFORMATION AVAILABLE, BUT NO GUARANTEE IS GIVEN THAT ALL EXISTING UTILITIES ARE SHOWN OR THAT THE GIVEN LOCATIONS ARE EXACT CONFIRMATION OF EXISTENCE AND EXACT LOCATION OF ALL SERVICES MUST BE OBTAINED FROM THE INDIVIDUAL UTILITIES BEFORE PROCEEDING WITH CONSTRUCTION

1.	DETAILS ADDED	4/6/79	R.B.
No	REVISIONS	DATE	APR.

CONSULTING ENGINEER

DUNHAM

CID

REGISTERED ENGINEER

LA

BUHR

15/6/79

Consulting Engineers & Planners

DESIGNED BY: C.I.D.

DRAWN BY: C.R.B.

CHECKED BY:

DATE: 30/MAY/79

APPROVED BY: [Signature]

DATE: 15/6/79

THE CITY OF WINNIPEG

WORKS & OPERATIONS DEPARTMENT

WATERWORKS, WASTE & DISPOSAL DIVISION

ASH DISTRICT - SEWER RELIEF CONTRACT II

MANHOLE TYPE III

MIDLAND RAILWAY AT ACADEMY RD.

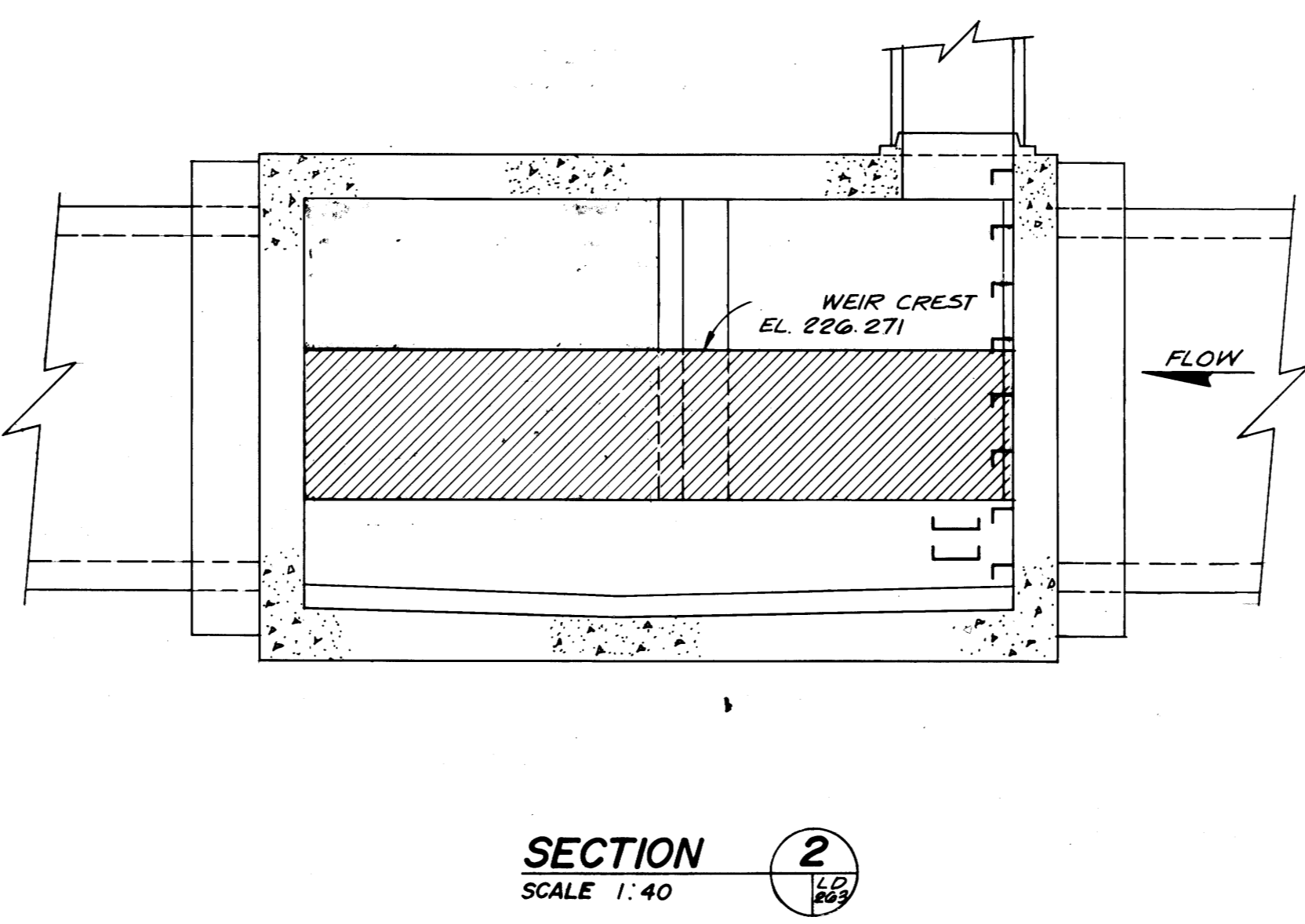
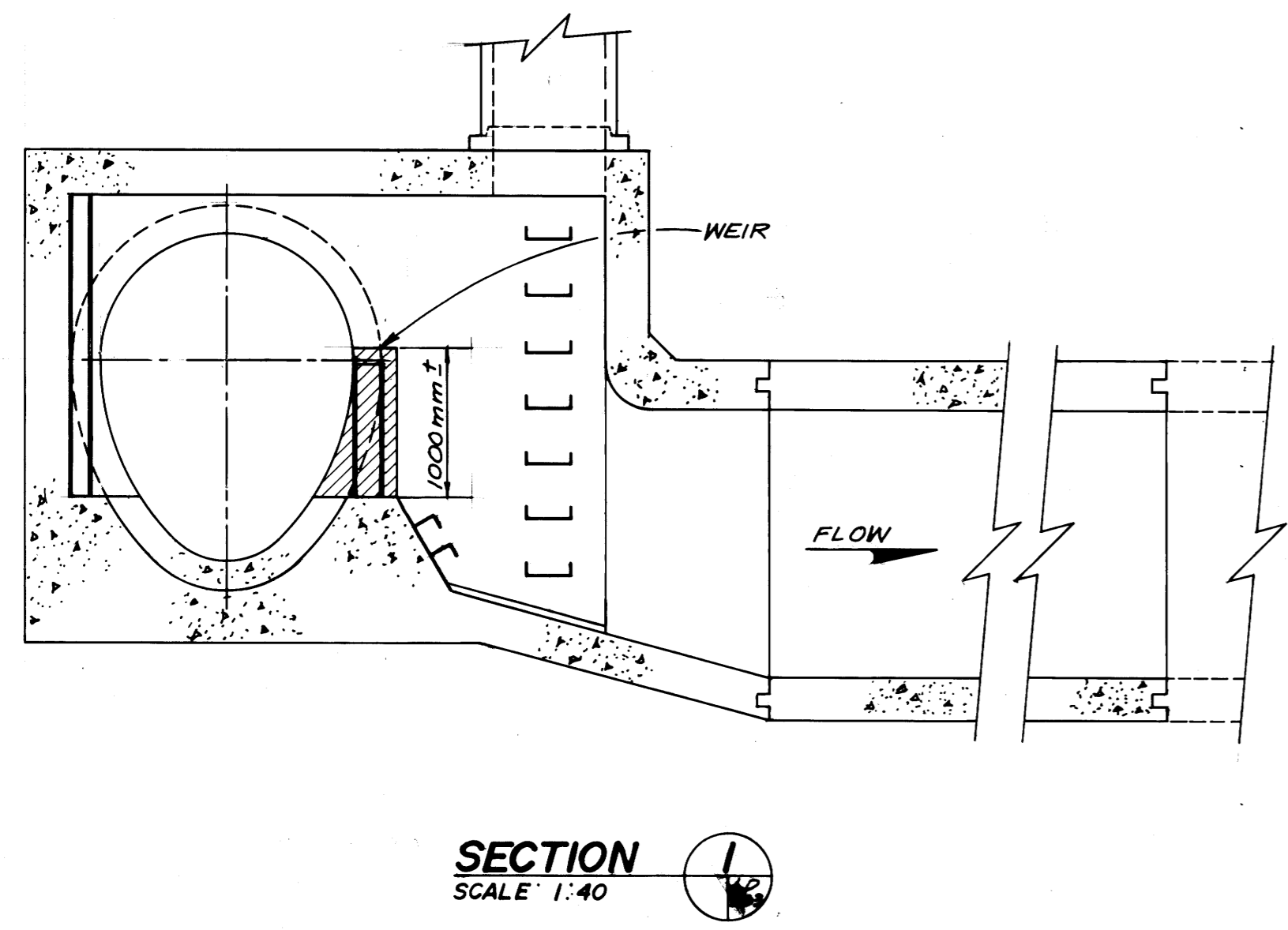
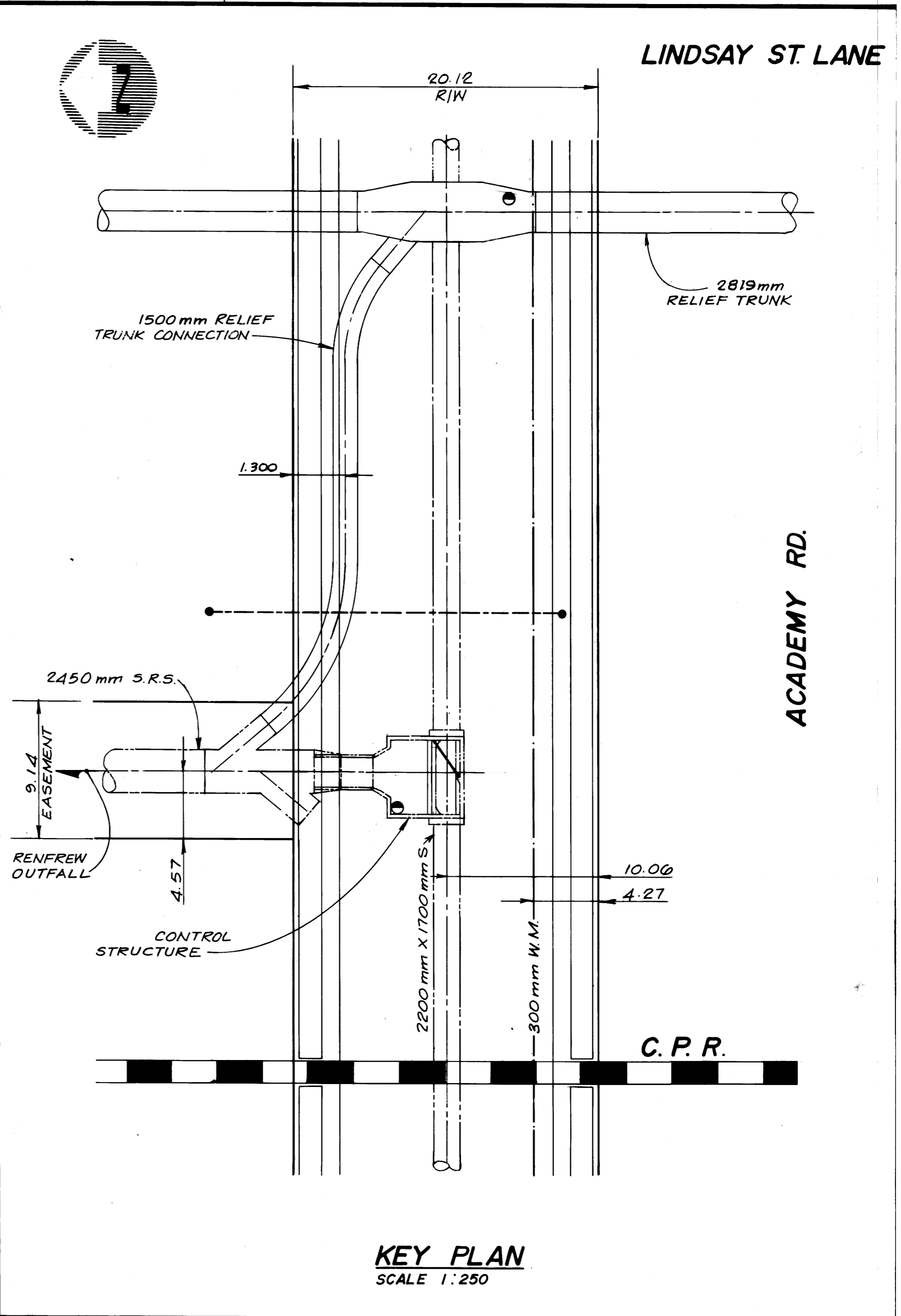
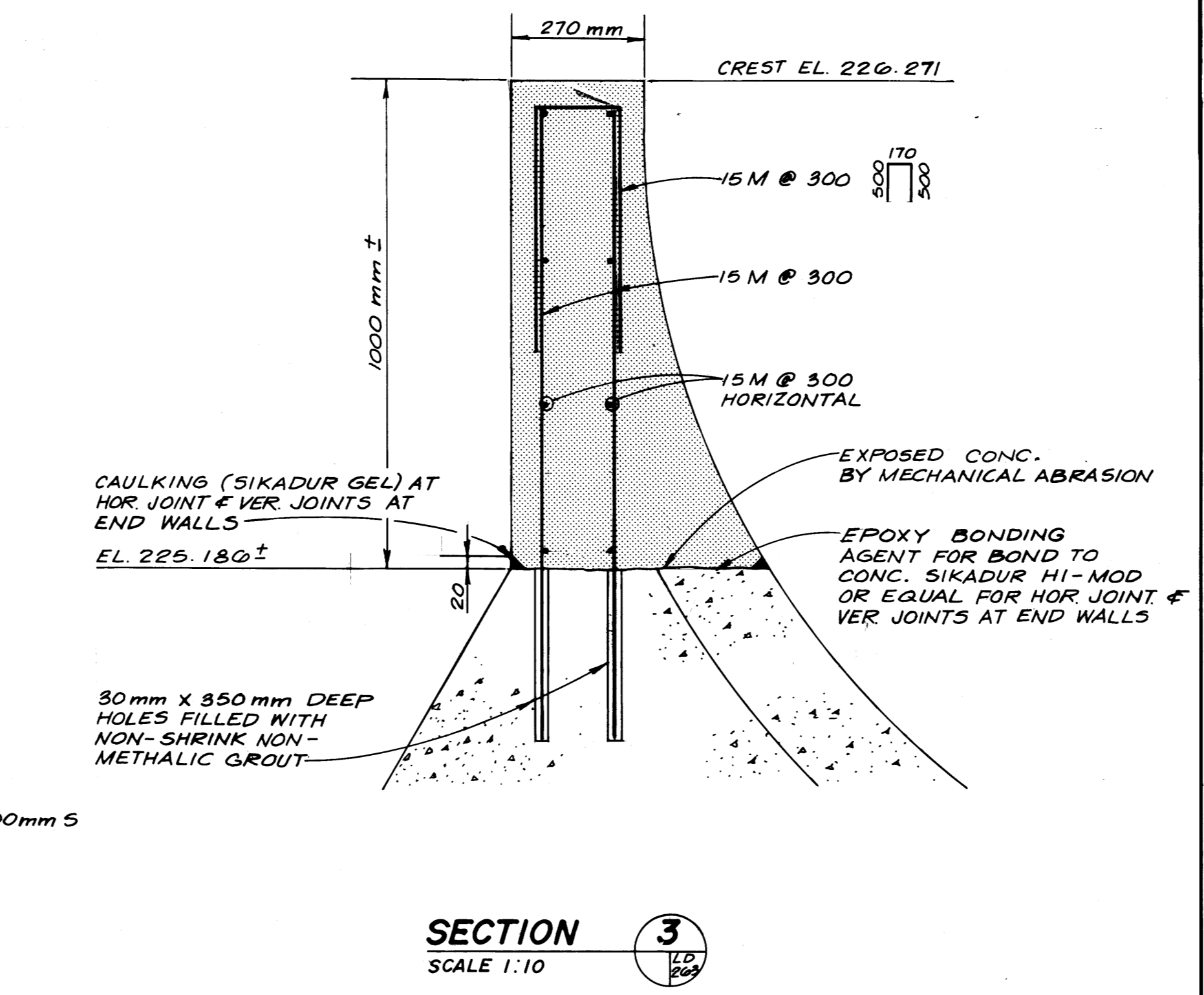
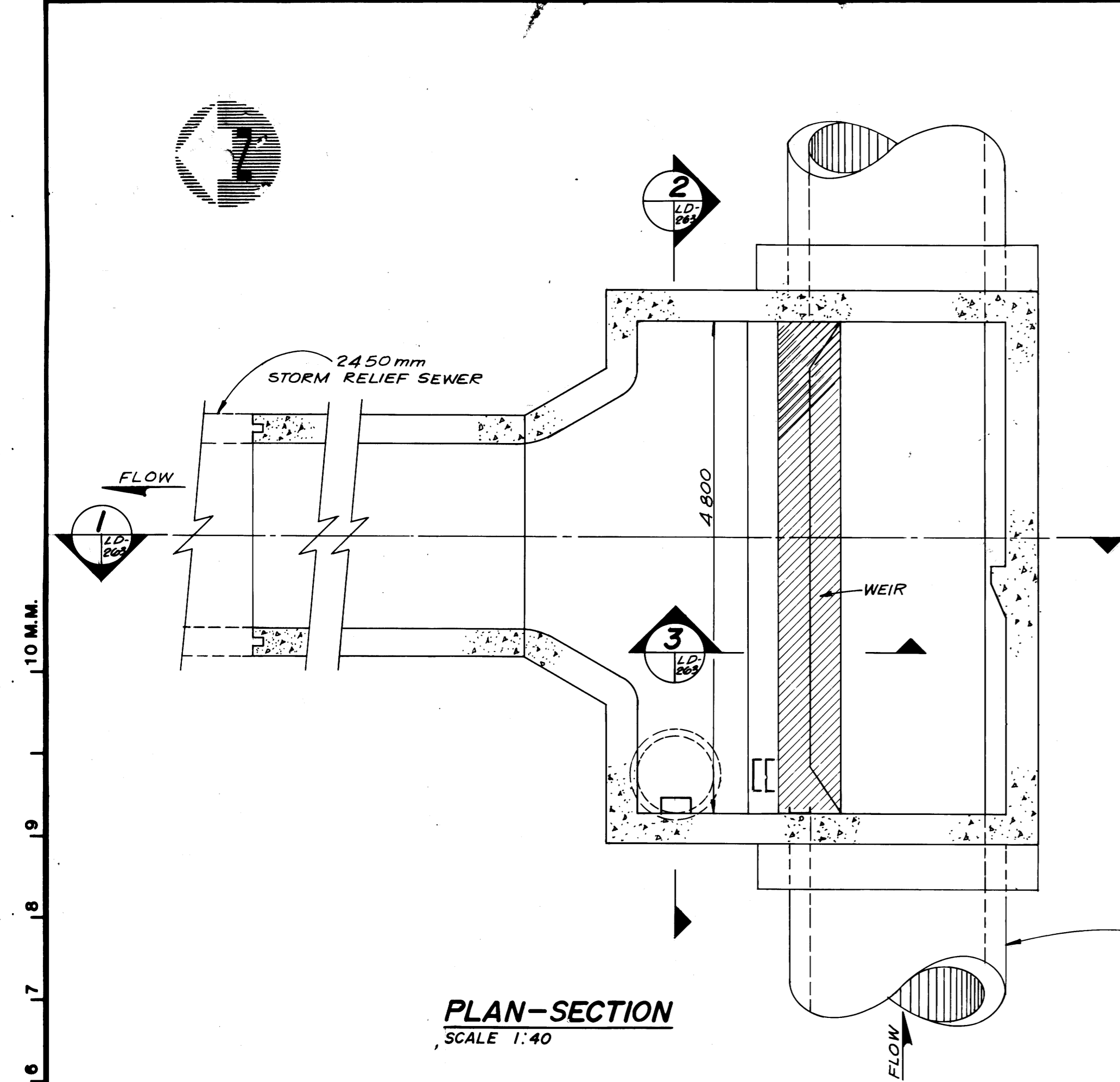
AUTHORIZED BY: [Signature]

DATE:

SCALE: 1:50 OR AS NOTED

DRAWING NO: LD-255





NOTE  
AS BUILT APPROVAL  
APPLIES ONLY TO THE  
RELIEF SEWER AND  
RELATED CONNECTIONS.

**AS BUILT**  
APPROVED BY: *[Signature]*  
17 Nov 81

**LEGEND**

WINNIPEG HYDRO STREET LIGHTING (S.L.)	CULVERT
MANITOBA HYDRO	HYDRANT
MANITOBA TELEPHONE SYSTEM (M.T.S.)	WATER VALVE (W.V.)
TRAFFIC SIGNALS (T.S.)	GAS VALVE (G.V.)
SEWER, STORM RELIEF SEWER (S., S.R.S.)	MANHOLE, M.T.S. (M.)
WATERMANS (W.M.)	HYDRO (H), SEWER (S)
GAS	CURB INLET
	CATCH BASIN
	SURVEY BAR
	BRASS PLUG & SURVEY CONTROL (M.)
	TREE
	GUY WIRE
	POLE

**WARNING**  
IF POWER EQUIPMENT OR EXPLOSIVES ARE TO BE USED FOR EXCAVATION ON THIS PROJECT THE CONTRACTOR MUST:  
1. NOTIFY THE GAS COMPANY OF THE PROPOSED LOCATION OF EXCAVATION.  
2. TAKE PRECAUTION TO AVOID DAMAGE TO GAS COMPANY INSTALLATIONS.  
SEE PROVINCIAL REGULATION 210/72 FOR DETAILS.

**UNDERGROUND STRUCTURES**  
LOCATIONS OF UNDERGROUND STRUCTURES AS SHOWN ARE BASED ON THE BEST INFORMATION AVAILABLE, BUT NO GUARANTEE IS GIVEN THAT ALL EXISTING UTILITIES ARE SHOWN OR THAT THE GIVEN LOCATIONS ARE EXACT. CONFIRMATION OF EXISTENCE AND EXACT LOCATION OF ALL SERVICES MUST BE OBTAINED FROM THE INDIVIDUAL UTILITIES BEFORE PROCEEDING WITH CONSTRUCTION.

No	DETAILS ADDED	DATE	APP.
1	DETAILS ADDED	79-06-27	LDM
	REVISIONS		

15/06/79  
DUNHAM  
REGISTERED ENGINEER  
L.A. BUH  
15/6/79

**Consulting Engineers & Planners**  
DESIGNED BY: R.J.H.  
DRAWN BY: G.F.G.  
CHECKED BY: L.D.M.  
DATE: 13/JUNE/79  
APPROVED BY: *[Signature]*  
DATE: 15/6/79

**THE CITY OF WINNIPEG**  
WORKS & OPERATIONS DEPARTMENT  
WATERWORKS, WASTE & DISPOSAL DIVISION

ASH DISTRICT - SEWER RELIEF CONTRACT II  
**ALTERATIONS TO EXIST. CONTROL STRUCTURE AT ACADEMY RD. & RENFREW OUTFALL**  
DATE: *[Signature]*  
DRAWING NO: LD-263

SW-0004

ACADEMY ROAD